

WISeNET

HEAD OFFICE

6, Pangyo-ro 319beon-gil, Bundang-gu, Seongnam-si,
Gyeonggi-do, 463-400 Rep. of KOREA
Tel : +82.70.7147.8753 Fax : +82.31.8018.3740
<http://hanwha-security.com>

Hanwha Techwin America

500 Frank W. Burr Blvd. Suite 43 Teaneck, NJ 07666
Toll Free : +1.877.213.1222
Direct : +1.201.325.6920 Fax : +1.201.373.0124
www.hanwhasecurity.com

Hanwha Techwin Europe

Heriot House, Heriot Road, Chertsey, Surrey, KT16 9DT, United Kingdom
Tel : +44.1932.57.8100 Fax : +44.1932.57.8101
www.hanwha-security.eu

Hanwha Techwin Tianjin

No.11 Weiliu Rd., Micro-electronic Industrial Park,
Jingang Road Tianjin 300385, China
Tel : +86-22-2388-7788 (8700)
www.hanwha-security.cn

Hanwha Techwin Middle East FZE

JAFZA View 18, 20th floor, office 2001, 2002, 2003,
Downtown Jebel Ali, Dubai, United Arab Emirates
<http://hanwha-security.com>

Hanwha Techwin Singapore Branch

4 Shenton Way, #15-06, SGX Centre 2, Singapore, 068807
Tel : +65.6221.7512 Fax : +65.6227.9337
<http://hanwha-security.com>

Hanwha Techwin Russia Office

40/4, Bolshaya Ordynka str., Moscow, Russia, 119017
Tel : +7.499.750.17.30
www.hanwha-security.eu/ru/

© 2019 Hanwha Techwin Co., Ltd. All rights reserved.

DESIGN AND SPECIFICATIONS ARE SUBJECT TO CHANGE WITHOUT NOTICE
Under no circumstances, this document shall be reproduced, distributed or changed,
partially or wholly, without formal authorization of Hanwha Techwin Co., Ltd.

M.H-1902



WISeNET X PLUS

2MP/5MP NW Modular Camera



Faster installation
X
Reduced costs

Advanced performance
X
Multiplied values



FIRST EDITION 2-2019

WISeNET X PLUS

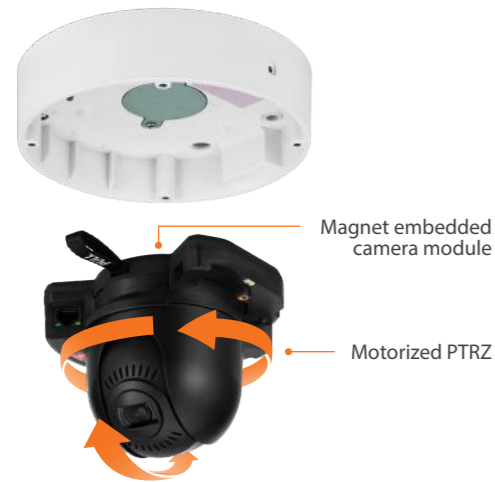
The most powerful chipset WISeNET 5

Wisenet X series is supercharged by the most powerful chipset ever incorporated into a full camera range. The Wisenet 5 chip uses an all-new architecture that enables faster processing. That means you get the best video performance just as you need it.



Easy installation with modular structure and motorized PTRZ

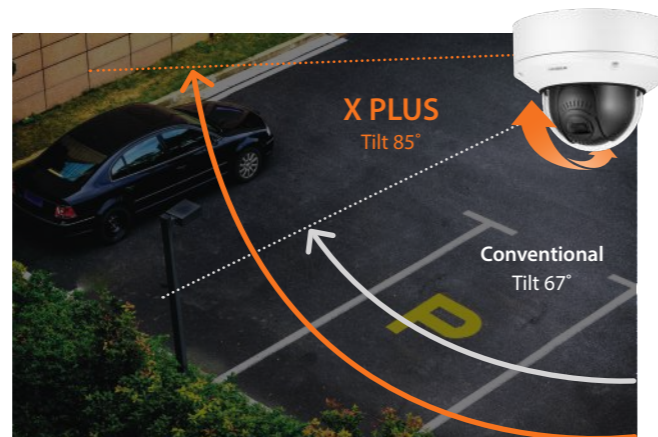
Wisenet X PLUS cameras offer easy installation with their modular structure and motorized PTRZ. The product package has been renewed to save time and money in installation and maintenance.



Installer friendly package : Easy to pre-network configuration

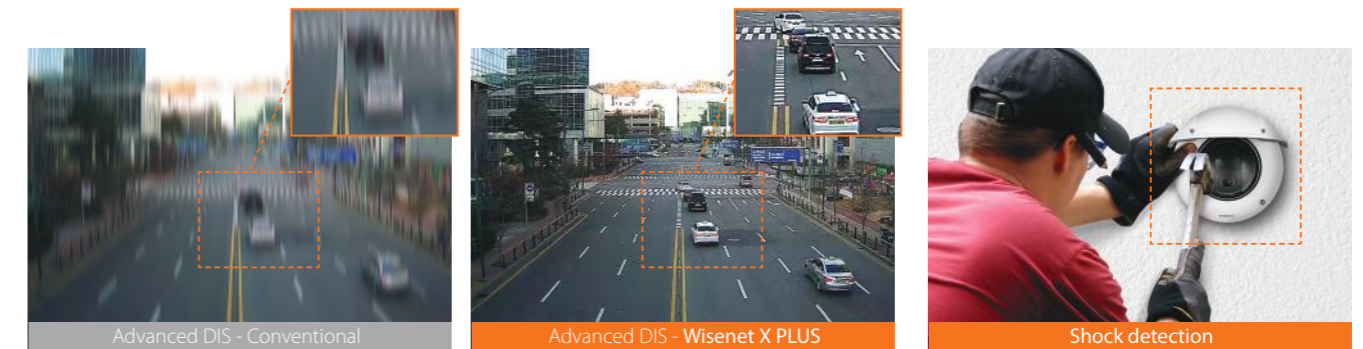
Extended tilt range for greater flexibility

Extended tilt angle has been added for greater flexibility in placement and use cases of Wisenet X PLUS cameras.



Advanced DIS and shock detection with built-in gyro sensors

Wisenet X PLUS cameras have built-in gyro sensors to enable advanced DIS with reduced motion blur and shock detection which detects when the camera is hit.



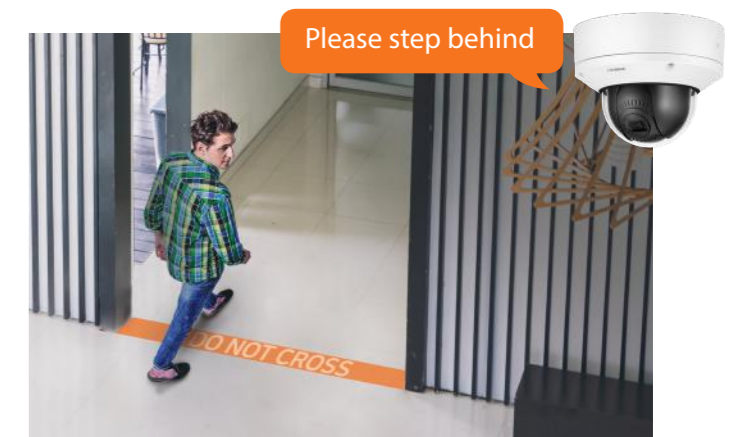
High reliability in challenging environments

One of the most important features of a security camera is reliability in challenging environments. Wisenet X PLUS cameras offer high reliability by providing resistance to weather and impact with IP67, IP66, IP6K9K, and IK10+ ratings.



Audio playback on event

Audio playback feature responds to user-defined events to assist operators communicate with the public.



True WDR performance(150dB)

Conventional WDR captures images by taking 2 frames taken at different exposures, whereas Wisenet X series cameras utilize 4 frame capture at different exposure levels to create a combined image. With the development of cutting-edge WDR technology, Wisenet X series cameras address a limitation found in conventional WDR cameras while producing clear and vivid images.



• 150dB WDR only available in 2MP X series

Clearer, sharper images in low light environments

Wisenet X series achieves optimal performance in low-light conditions by capturing and producing crystal-clear images regardless of the environment or time of day.



Fog Detection

Wisenet X series delivers outstanding image quality in foggy weather with Fog Detection. Any change in an image is automatically deleted with the defog function to provide a clear image.



Enhanced video and audio analytics

Wisenet X series support a variety of exclusive Video and Audio Analytics, providing enhanced monitoring solutions and market intelligence.

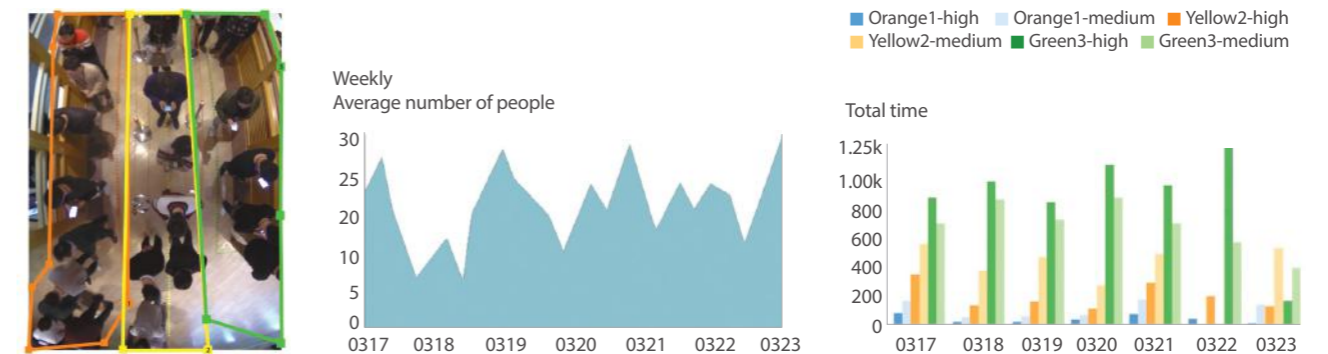
People counting and Heat map

The Wisenet X PLUS cameras have a business intelligence function that offers retailers the opportunity to measure store efficiency. People counting and heat map applications display hotspots within a store, which allow marketing personnel to identify the busiest times of the day, helping them manage customer flow and understand buying patterns.



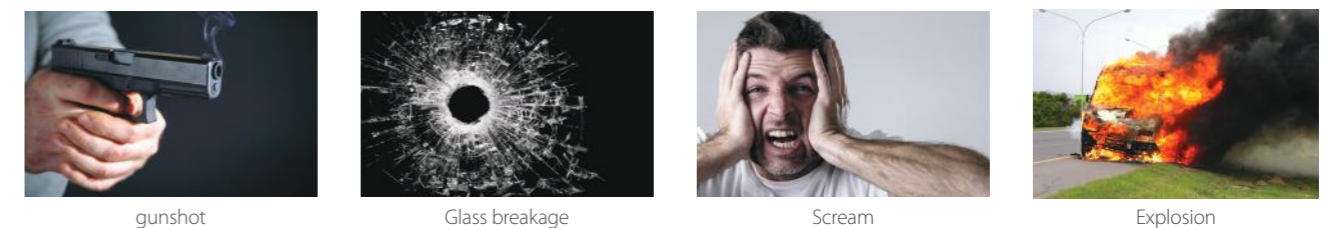
Queue management

This feature provides statistical analysis and measurement for average dwell time and number of people in queues. This insight is critical for business to manage their operations more efficiently, while providing the insight necessary to manage campaigns, displays and promotions throughout retail locations.



Sound classification

Wisenet X series camera help user respond immediately in case of situation in danger, so that can classify sound such as gunshot, glass breakage, scream and explosion.

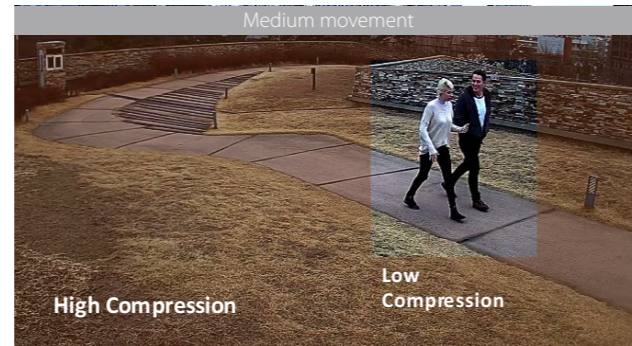


Improve bandwidth by up to 99% using WiseStream II

Using WiseStream II, Hanwha Techwin's original video compression technology, the Wisenet X series reduces data by up to 99% compared to current H.264 technology, when combined with H.265 compression. System costs are also greatly reduced without compromising image quality. Wisenet X series cameras address a limitation found in conventional WDR cameras while producing clear and vivid images.



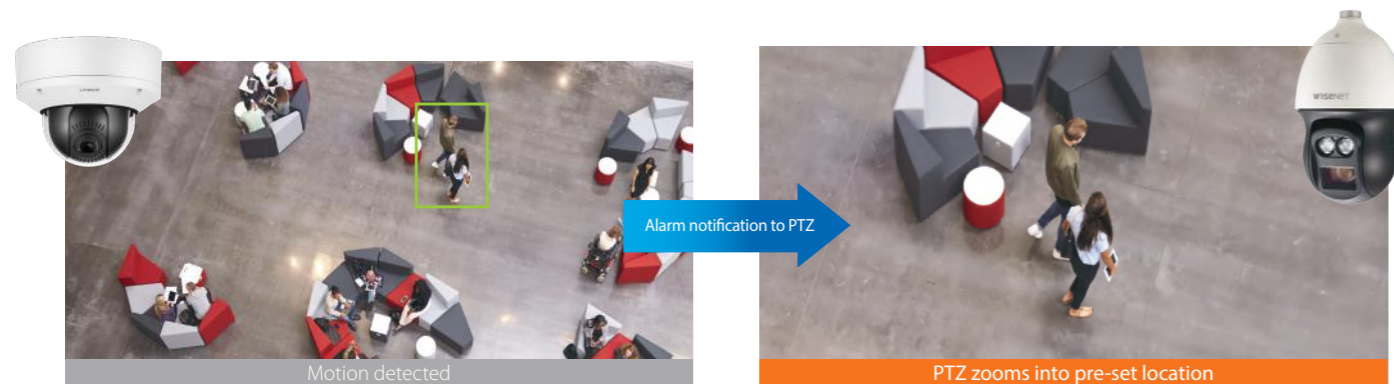
WiseStream II OFF : 7160kbps **WiseStream II ON : 74kbps**



WiseStream II OFF : 7260kbps **WiseStream II ON : 1817kbps**

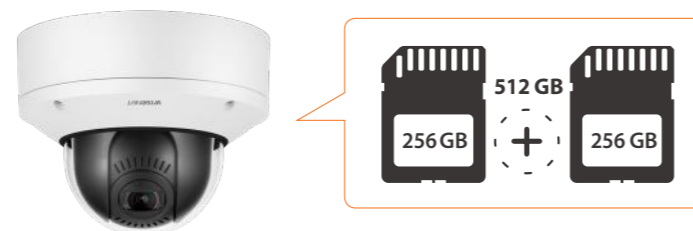
Handover to PTZ

The handover feature allows a PTZ camera* to receive an alarm(motion detection) from Wisenet X series camera operating on the same IP video surveillance system. Once the notification is received, the PTZ camera will zoom into the assigned camera pre-set location. This feature improves the efficiency of the surveillance system by decreasing the reliance on the system operator on tracking events, and by increasing the likelihood that critical events in a surveillance area will be captured and recorded. ※PNP-9200RH / XNP-6370RH



Dual SD slots

Dual SD slots allow up to 512 GB to be saved automatically to the camera, keeping data safe in the event of an unstable network. Obviously this allows to record more video footage than single SD slot.



Optional accessories for various applications

A weather cap and the skin covers available in black and ivory would blend in with the surroundings of different kinds.



Weather cap



Ivory & Black skin cover

- Weather cap(XNV only) and ivory skin cover(XNV and XND) are included in product package. The weather cap can not be applied with the skin cover on.



SBC-180B

Skin cover
Compatible with XNV-6081Z/8081Z



SBC-160B

Skin cover
Compatible with XND-6081Z/8081Z



SPC-100AC

AC24V power module
Compatible with XNV-6081Z/8081Z



SBP-187HMMW / 187HM

Hanging mount
Compatible with XNV-6081Z/8081Z



SBP-167HMMW / 167HM

Hanging mount
Compatible with XND-6081Z/8081Z



SBP-300WMW1

Wall mount
Compatible with SBP-180HMMW/160HMMW



SBP-300KMW

Corner mount
Compatible with SBP-300WMW1



SBP-300PMW

Pole mount
Compatible with SBP-300WMW1



SBP-300CMW

Ceiling mount
Compatible with SBP-180HMMW/160HMMW



XND-8081VZ



XND-8081FZ



XNV-8081Z

Type	Indoor vandal dome	Indoor flush mount	Outdoor vandal dome
Imaging Device	1/1.8" 6M CMOS		
Video Compression	H.265, H.264, MJPEG		
Resolution / Frame Rate	5M / 30fps		
Streaming Capacity	Multiple (Up to 10 Profiles)		
Max. User Access	20 (Unicast)		
Min. Illumination	Color : 0.07 Lux, B/W : 0.007 Lux		
Video Output	Micro USB type B		
Lens	3.6~9.4mm (2.6x) motorized V/F (F1.2)		
Angular Field of View	H : 102.5°(Wide) ~ 38.7°(Tele) / V : 74.2°(Wide) ~ 29.0°(Tele) / D : 135.5°(Wide) ~ 48.6°(Tele)		
Focus Control	Simple focus (motorized V/F) / Manual		
Pan / Tilt / Rotate	±175° / 0~85° / ±175°		
Day & Night	True(ICR)		
Backlight Compensation	WDR (120dB)		
Digital Noise Reduction	SSNRV (2D+3D Noise filter)		
Digital Image Stabilization	Support (Built in Gyro sensor)		
Video & Audio Analytics	Tampering, Loitering, Directional Detection, Defocus Detection, Fog Detection, Virtual Line, Enter/Exit, (Dis)Appear, Audio Detection, Face Detection, Motion Detection, Digital Auto Tracking, Sound Classification, Shock detection, Heatmap, People counting, Queue management, Audio Playback on event		
Protocol	ONVIF profile S/G, SUNAPI		
Alarm I/O	1 / 1		
Audio	Bi-Directional		
Edge Storage	SD/SDHC/SDXC, NAS, Local PC		
Environment Protection	IP52, IK10	IP52, Plenum rate(UL2820)	IP67, IP66, IP6K9K, NEMA 4X, IK10+
Operating Temperature	-25°C ~ +60°C (-13°F ~ +140°F)		-50°C ~ +60°C (-58°F ~ +140°F) * Start up above -35°C (-31°F)
Power	Max. 8.5W (12V DC) Max. 10W (PoE)		Max. 11W (24V AC) Max. 9.5W (12V DC) Max. 11W (PoE)
Dimensions (WxHxD) / Weight	Ø 160 x 125mm (6.30" x 4.92") 1.45 kg (3.2lb)	Ø 205 x 155mm (8.07" x 6.10") 1.85 kg (4.08lb)	Ø 180 x 125mm (7.09" x 4.92") 1.75 kg (3.86lb)
Additional Features	Motorized Pan / Tilt / Rotate, Modular design		



XND-6081VZ



XND-6081FZ



XNV-6081Z

Type	Indoor vandal dome	Indoor flush mount	Outdoor vandal dome
Imaging Device	1/2.8" 2M CMOS		
Video Compression	H.265, H.264, MJPEG		
Resolution / Frame Rate	2M / 60fps		
Streaming Capacity	Multiple (Up to 10 Profiles)		
Max. User Access	20 (Unicast)		
Min. Illumination	Color : 0.015 lux, B/W : 0.0015 Lux		
Video Output	Micro USB type B		
Lens	2.8~12mm(4.3x) motorized V/F (F1.4)		
Angular Field of View	H : 119.5°(Wide) ~ 27.9°(Tele) / V : 62.8°(Wide) ~ 15.7°(Tele) / D : 142.1°(Wide) ~ 32.0° (Tele)		
Focus Control	Simple focus (motorized V/F) / Manual		
Pan / Tilt / Rotate	±175° / 0~85° / ±175°		
Day & Night	True (ICR)		
Backlight Compensation	WDR (150dB)		
Digital Noise Reduction	SSNRV (2D+3D Noise filter)		
Digital Image Stabilization	Support (Built in Gyro sensor)		
Video & Audio Analytics	Tampering, Loitering, Directional Detection, Defocus Detection, Fog Detection, Virtual Line, Enter/Exit, (Dis)Appear, Audio Detection, Face Detection, Motion Detection, Digital Auto Tracking, Sound Classification, Shock detection, Heatmap, People counting, Queue management, Audio Playback on event		
Protocol	ONVIF profile S/G, SUNAPI		
Alarm I/O	1 / 1		
Audio	Bi-Directional		
Edge Storage	SD/SDHC/SDXC, NAS, Local PC		
Environment Protection	IP52, IK10	IP52, Plenum rate(UL2820)	IP67, IP66, IP6K9K, NEMA 4X, IK10+
Operating Temperature	-25°C ~ +60°C (-13°F ~ +140°F)		-50°C ~ +60°C (-58°F ~ +140°F) * Start up above -35°C (-31°F)
Power	Max. 8.5W (12V DC) Max.10W (PoE)		Max. 11W (24V AC) Max. 9.5W (12V DC) Max. 11W (PoE)
Dimensions (WxHxD) / Weight	Ø 160 x 125mm (6.30" x 4.92") 1.45kg (3.2lb)	Ø 205 x 155mm(8.07" x 6.10") 1.85 kg (4.08lb)	Ø 180 x 125mm(7.09" x 4.92") 1.75 kg(3.86lb)
Additional Features	Motorized Pan / Tilt / Rotate, Modular design		

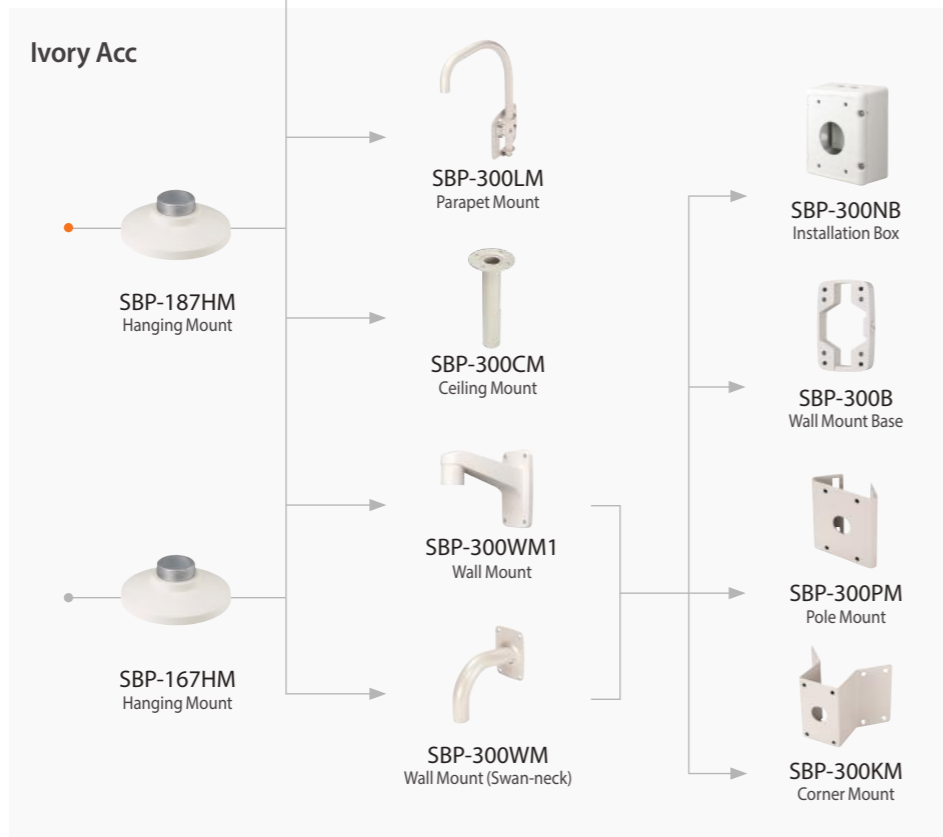
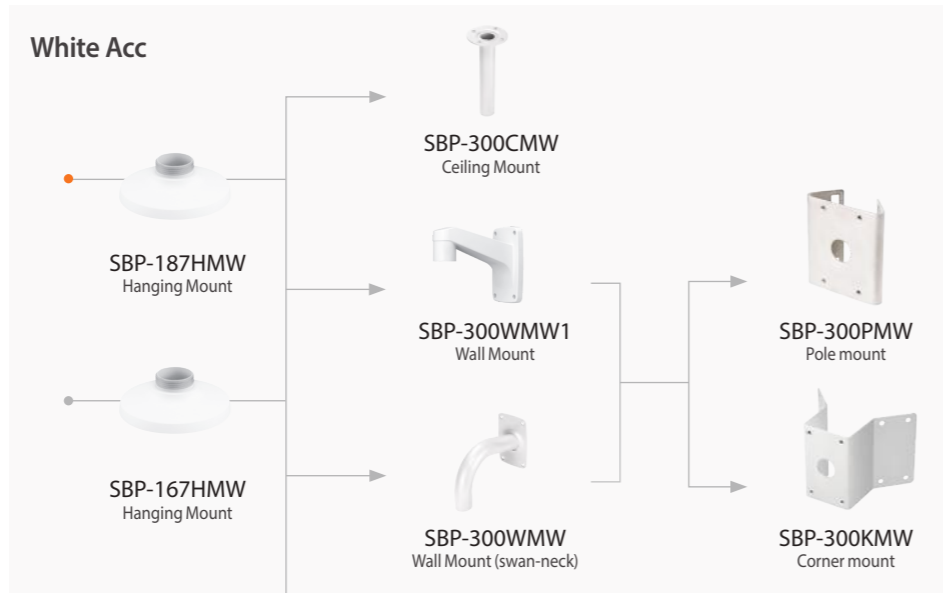
Accessory Configuration



XNV-6081Z/8081Z



XND-6081VZ/8081VZ



MEMO