

BioStation 2

Fingerprint IP Access terminal



BioStation 2 incorporates the latest Suprema technology in a beautiful exterior. It combines a new powerful processor. Suprema's next generation optical sensor and improved fingerprint sensing & capturing algorithm to offer unrivaled performance. BioStation 2 provides users with instant authentication and rapid data transfer to manage high volume data with ease. It is ideal for applications that requires versatility without compromise in style and performance.

BioStation 2

Fingerprint IP Access terminal

Features



Instant Matching & Authentication

- Improved matching algorithm, memory handling and powerful processor up to 20,000 matches per second



Rapid Data Transfer

- Optimal data transfer between the server and the device to transfer up to 5,000 user data in under a minute



Expanded Memory Capacity

- 1,000,000 fingerprint template
- 3,000,000 event logs



IP65 Certified Dust & Water Protection

- Ideal for harsh environment and outdoor installation



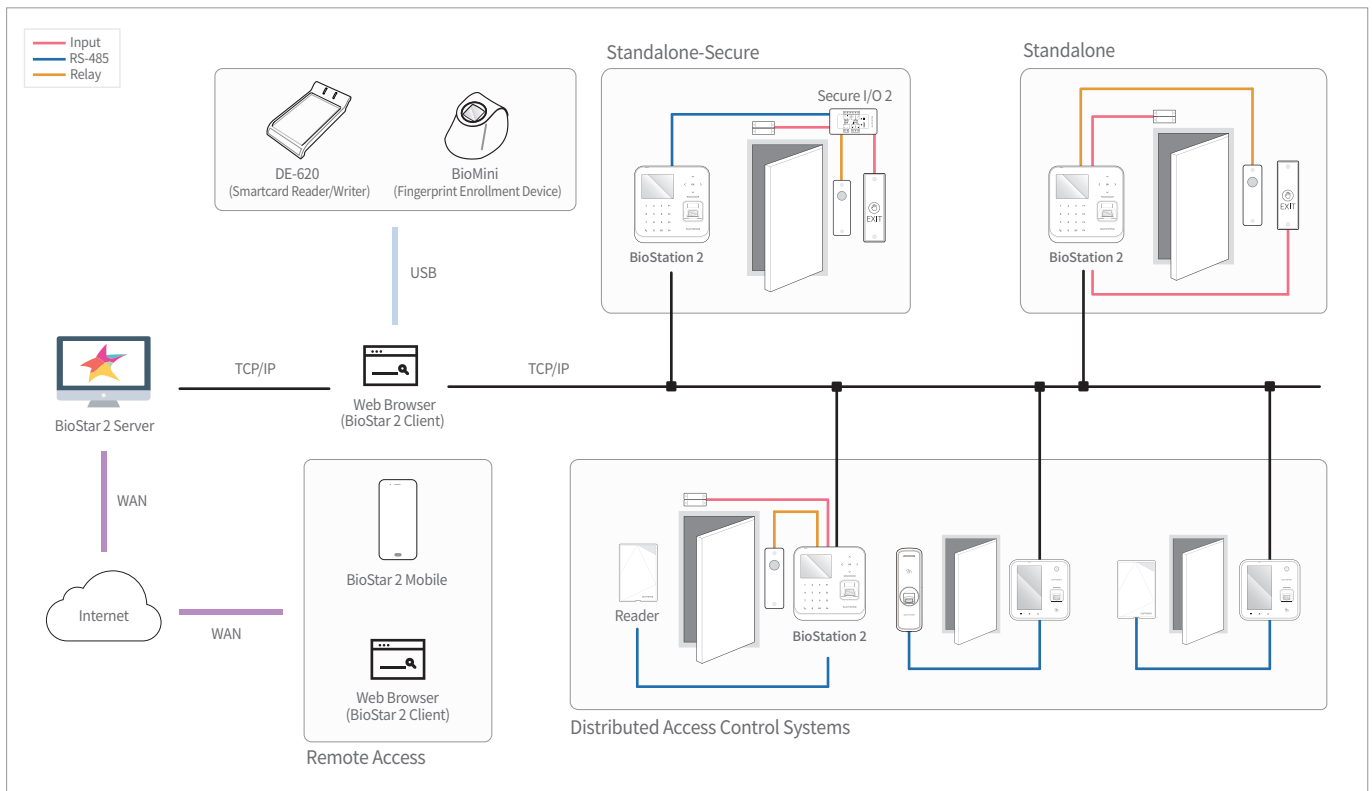
Versatile Interface

- Built-in WiFi and Power-over-Ethernet functionality for wide range of installation options

Specifications

Biometric	Fingerprint								
Sensor Type	Optical Sensor (OP5)								
Template	SUPREMA / ISO 19794-2 / ANSI 378								
Extractor / Matcher	MINEX certified and compliant								
LFD	Supported								
RF Option	<table border="1"> <tr> <th>B52-OEPW</th> <th>B52-OHPW</th> <th>B52-OIPW</th> <th>B52-OMPW</th> </tr> <tr> <td>125 KHz EM</td> <td>125 KHz HID Prox</td> <td>13.56MHz MIFARE, MIFARE Plus, DESFire/EV1, FelCa, iCLASS SE/SR, NFC, ISO14443A/B, ISO15693</td> <td>13.56MHz MIFARE, MIFARE Plus, DESFire/EV1, FelCa, NFC, ISO14443A, ISO15693</td> </tr> </table>	B52-OEPW	B52-OHPW	B52-OIPW	B52-OMPW	125 KHz EM	125 KHz HID Prox	13.56MHz MIFARE, MIFARE Plus, DESFire/EV1, FelCa, iCLASS SE/SR, NFC, ISO14443A/B, ISO15693	13.56MHz MIFARE, MIFARE Plus, DESFire/EV1, FelCa, NFC, ISO14443A, ISO15693
B52-OEPW	B52-OHPW	B52-OIPW	B52-OMPW						
125 KHz EM	125 KHz HID Prox	13.56MHz MIFARE, MIFARE Plus, DESFire/EV1, FelCa, iCLASS SE/SR, NFC, ISO14443A/B, ISO15693	13.56MHz MIFARE, MIFARE Plus, DESFire/EV1, FelCa, NFC, ISO14443A, ISO15693						
CPU	1.0 GHz Single Core								
Memory	8GB Flash + 256MB RAM								
Max. User	500,000 (1:1), 20,000(1:N)								
Max. Template	1,000,000(1:1), 40,000(1:N)								
Max. Logs	3,000,000(text)								
LED	Multi-Color								
Sound	16-bit Hi-Fi								
Ethernet	Supported (10/100 Mbps, auto MDIX)								
RS-485	1ch Host or Slave (Selectable), OSDP V2.1.6								
Wiegand	1ch Input, 1ch Output								
TTL	2ch Inputs, 2ch Outputs								
Relay	1 Relay								
PoE	Supported (IEEE 802.3af compliant)								
Tamper	Supported								
Power	Voltage: DC 12V Current: Max. 1A								
Operating Temperature	-20°C ~ 50°C								
Operating Humidity	0% ~ 80%, non-condensing								
Dimensions (WxHxD, mm)	142 x 145 x 45 mm								
Unit Weight	440g								
Certificates	CE, FCC, KC, RoHS, REACH, WEEE								

System Configurations



Suprema Inc.

17F Parkview Tower, 248, Jeongjail-ro, Bundang-gu, Seongnam-si, Gyeonggi-do, 13554, Rep. of KOREA

Tel: +82 31 783 4502 | Fax: +82 31 783 4503 | Inquiry: sales@supremainc.com | www.supremainc.com

©2018 Suprema Inc. Suprema and identifying product names and numbers herein are registered trademarks of Suprema, Inc. All non-Suprema brands and product names are trademarks or registered trademarks of their respective companies. Product appearance, build status and/or specifications are subject to change without notice.

[AHL-BS2-180111-03-EN]

Suprema
BIOMETRICS & SECURITY