

BioEntry P2

Compact IP Fingerprint Device



Suprema BioEntry P2 is a compact fingerprint access control device featuring Suprema's next generation biometric technology and security platform. BioEntry P2 provides class-leading performance and security by featuring Suprema's latest fingerprint algorithm coupled with powerful 1.0GHz CPU. Packed in a million-type sleek design, BioEntry P2 also provides added flexibility in system design by featuring multi card reading with dual-frequency RFID technology. With its selection of communication interfaces and credential options, BioEntry P2 is a perfect IP access control solution for sites large or small.

Features



Best-in-class Performance

- Latest Suprema algorithm
- Fast matching: Max 10,000 match/sec
- Powerful 1.0GHz CPU
- High-precision OP6 optical sensor



Enterprise-level Capacity

- Max. 10,000 users
- Max. 1,000,000 event logs



Multi RFID Card Reading

- LF(125kHz), HF(13.56MHz) dual-band
- Reads all card types including HID multiCLASS (EM/HID Prox/MIFARE/iCLASS/DESFire/FeliCa/NFC)



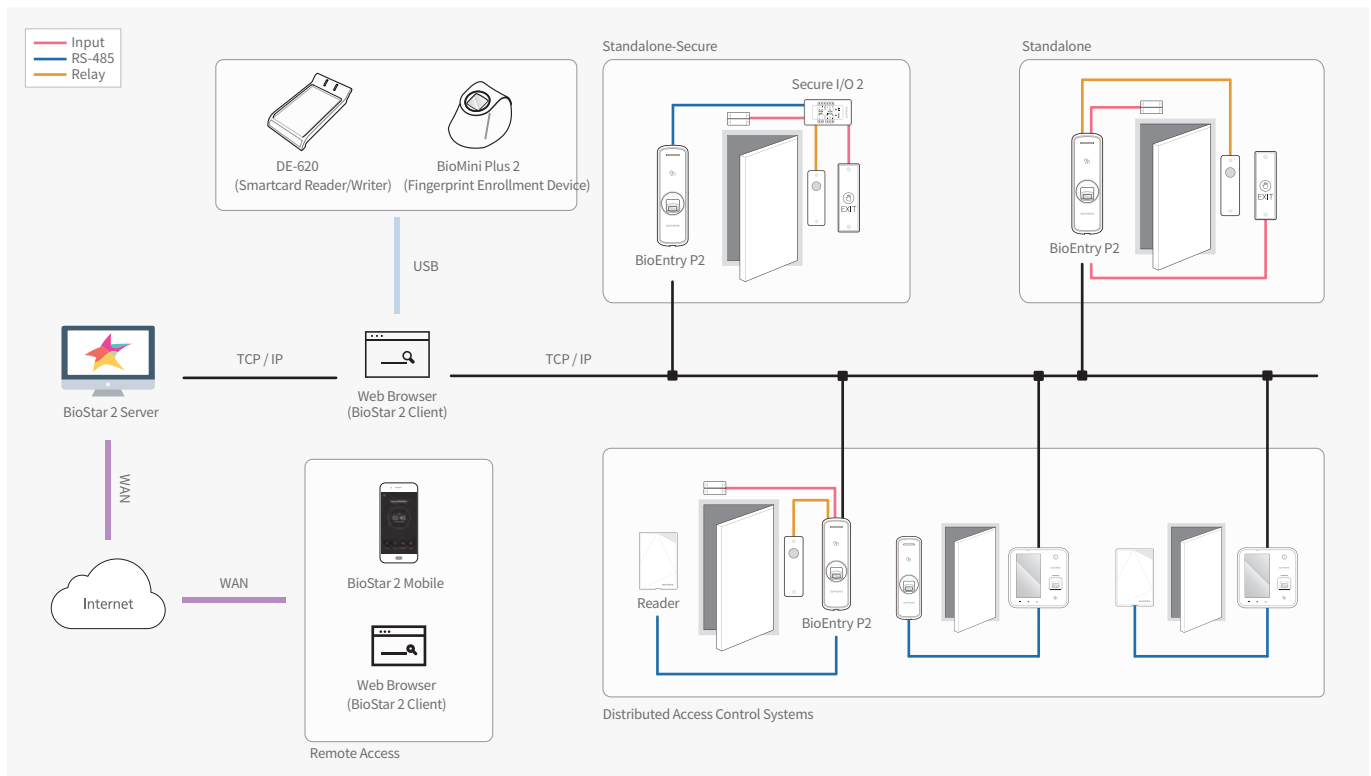
Versatile Interfaces

- Communication: TCP/IP, RS-485, Wiegand
- Input/output: TTL I/O, Relay

Specifications

Biometric		Fingerprint	
Sensor Type		Optical Sensor (OP6)	
Template		SUPREMA / ISO 19794-2 / ANSI 378	
Extractor / Matcher		MINEX certified and compliant	
RF Option		BEP2-OD	BEP2-OA
		125kHz EM & 13.56MHz MIFARE, MIFARE Plus, DESFire/EV1, FeliCa, NFC	125kHz EM, HID Prox & 13.56MHz MIFARE, MIFARE Plus, DESFire/EV1, FeliCa, iCLASS SE/SR/Seos, NFC
CPU		1.0 GHz	
Memory		8GB Flash + 64 MB RAM	
Max. User (1:1)		10,000 (Based on one finger enrollment per user)	
Max. User (1:N)		10,000 (Based on one finger enrollment per user)	
Max. Finger per user		10	
Max. Text Logs		1,000,000(text)	
LED		Multi-Color	
Sound		Multi-tone Buzzer	
Ethernet		10/100 Mbps, auto MDI/MDI-X	
RS-485		1ch Host or Slave (Selectable)	
Wiegand		1ch Input or Output (Selectable)	
TTL		2ch Input	
Relay		1 Relay	
Tamper		Supported	
Power		DC 12V	
Dimensions (WxHxD,mm)		50 x 164 x 37.5	
Certificates		CE, FCC, KC, RoHS, REACH, WEEE	

System Configurations



Suprema Inc.

17F Parkview Tower, 248, Jeongjail-ro, Bundang-gu, Seongnam-si, Gyeonggi-do, 13554, Rep. of KOREA

Tel: +82 31 783 4502 | Fax: +82 31 783 4503 | Inquiry: sales@supremainc.com | www.supremainc.com

©2018 Suprema Inc. Suprema and identifying product names and numbers herein are registered trademarks of Suprema, Inc. All non-Suprema brands and product names are trademarks or registered trademarks of their respective companies. Product appearance, build status and/or specifications are subject to change without notice.
[AHL-BEP2-180806-06-EN]