

# X-Station 2

Versatile Intelligent Terminal



Suprema X-Station 2 is a versatile intelligent terminal that supports Mobile Access, RFID cards as well as QR codes, offering the ultimate flexibility in terms of credential options and system design.








**SUPrema**  
SECURITY & BIOMETRICS

# X-Station 2

## Versatile Intelligent Terminal

### Benefits at a glance

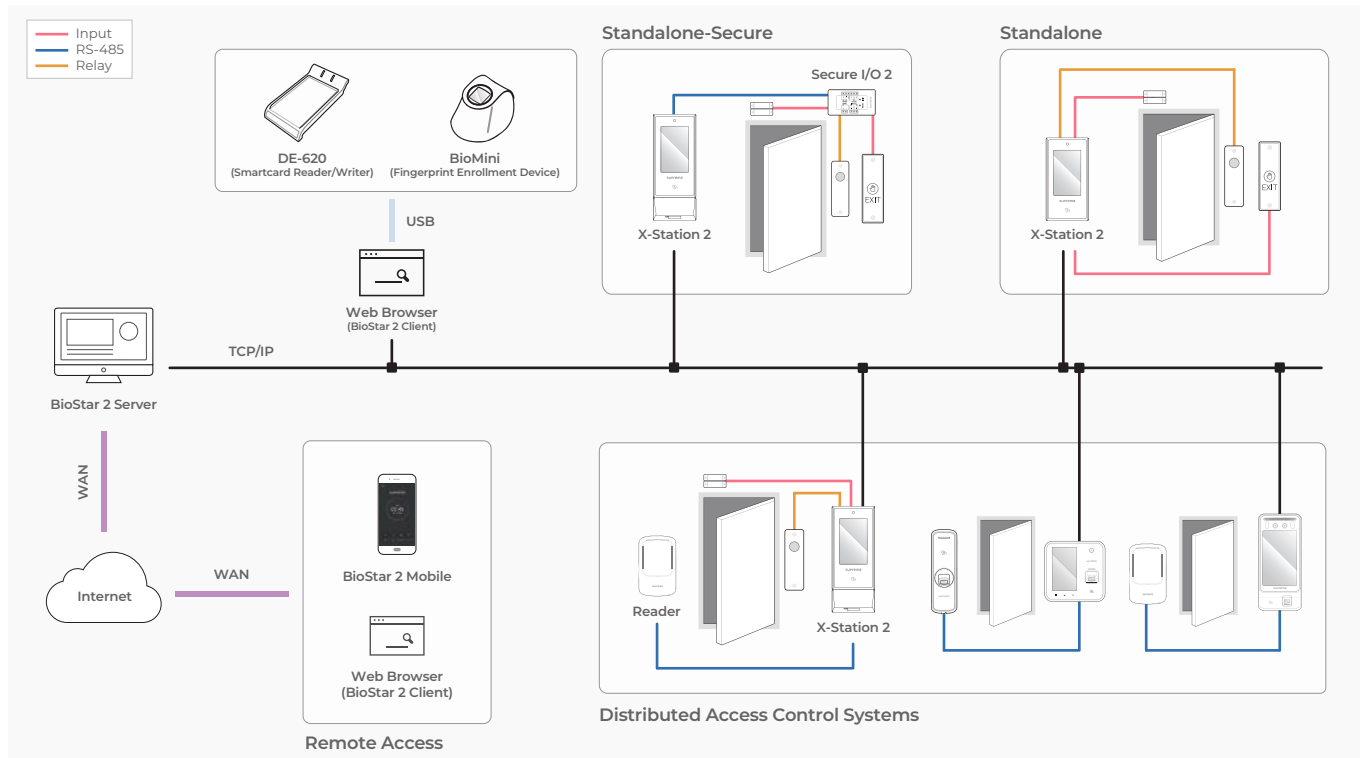
- 
**Multi-technology Terminal with Various Credential Options**
  - Multiple credential options of RFID cards, Mobile Access and QR codes offer maximum system design flexibility
  - Go mobile, card-less and carefree by using smartphones as credentials
- 
**Comprehensive RFID Card Compatibility**
  - LF (125 kHz), HF (13.56 MHz) dual-band
  - Reads various card types (EM/MIFARE/iCLASS/DESFire/FeliCa)
- 
**Enhanced Security and Data Protection**
  - Protects data with secure boot process
  - Built-in camera captures image logs for added security
  - Open Supervised Device Protocol (OSDP) for secure bidirectional communication between the terminal and controller
  - Built on Android and all its security enhancements
- 
**Designed for easy deployment and management**
  - Power over Ethernet (PoE) enables convenient installation with less wiring
  - Dust-tight and waterproof IP65 protection
- 
**Improved Usability of Android UI on Touchscreen**
  - Quick and easy access to features on 4" wide capacitive touchscreen
  - Customizable display on intuitive Android GUI
- 
**Expanded Capacity for more users and security logs**
  - Max. 500k users, 5 million text logs, 50k image logs
  - Large memory: 16 GB Flash + 1 GB RAM

### Specifications

Model Name	XS2-DPB	XS2-QDPB	XS2-APB	XS2-QAPB
RF Option	125 kHz EM & 13.56 MHz MIFARE, MIFARE Plus, DESFire EV1/EV2*, FeliCa		125 kHz EM, HID Prox & 13.56 MHz MIFARE, MIFARE Plus, DESFire EV1/EV2*, FeliCa, iCLASS SE/SR/Seos	
Mobile Card	NFC, BLE			
QR/Barcode	N/A	Supported*	N/A	Supported*
CPU	1.5 GHz Quad Core			
Memory	16 GB Flash + 1 GB RAM			
Max. User	500,000			
Max. Logs	Text 5,000,000 / Image 50,000			
LCD	4" IPS color LCD / 480 x 800 pixels			
Camera	CMOS 2M pixels / 1600 x 1200			
Ethernet	Supported (10/100 Mbps, auto MDI/MDI-X)			
RS-485	1 ch Host or Slave (Selectable)			
Wiegand	1 ch Input or Output (Selectable)			
TTL	2 ch Inputs			
Relay	1 Relay			
PoE	Supported (IEEE 802.3af compliant)			
IP rating	IP65			
Tamper	Supported			
Power	DC 12 V (Max. 0.8 A) or DC 24 V (Max. 0.45 A)			
Dimensions (WxHxD, mm)	82 mm x 159 mm x 25.9 mm	82 mm x 203 mm x 33.9 mm	82 mm x 159 mm x 25.9 mm	82 mm x 203 mm x 33.9 mm
Operating temperature	-20°C~50°C			
Certificates	KC, CE, FCC (Compliance: RoHS, REACH, WEEE)			

\* DESFire EV2 cards are supported by having backward compatibility of DESFire EV1 cards. CSN and smart card functions are compatible with X-Station 2.  
 \* Supports QR/Barcodes composed of up to 32 ASCII code strings. QR codes can be issued on Suprema BioStar 2 or 3rd party systems.

### System Configurations



### Suprema Inc.

17F Parkview Tower, 248, Jeongjail-ro, Bundang-gu, Seongnam-si, Gyeonggi-do, 13554, Republic of Korea  
 T +82 31 783 4502 E sales\_sys@supremainc.com www.supremainc.com



For more information about Suprema's global offices, visit the webpage below by scanning the QR code.  
<https://www.supremainc.com/en/about/contact-us.asp>