



## V-series AI Camera








FD9189-V3 / FD9389-V3 / IB9389-V3 / FD9199 / FD9399 / IB9399

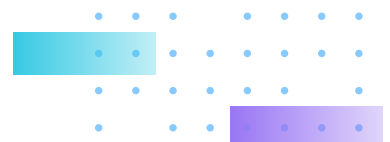


VIVOTEK's V-series AI cameras combine advanced intelligence with high-quality imaging, available in both 5MP and 8MP options. With AI-driven incident detection and real-time alerts, the cameras provide live-streaming capabilities to enhance deterrence. The user-friendly design reduces installation time and maximizes safety. This product series is the ideal solution for building a reliable and effective security system.

### Features

● Hardware ● Software

<b>5 / 8MP Resolution</b> AI Camera		<b>40 Meters IR Illuminator</b>	
<b>HDMI Output</b> Streams live camera footage		<b>Simple Installation</b> Single (T10) Screw Mechanism and Interchangeable I/O Cable	
<b>TPM 2.0 Encryption Chip</b> Protects sensitive data and credentials		<b>Trend-Micro™ IoT Security</b> Defend and Quarantine Vulnerability Protection	
<b>Vision Object Analytic</b> Identify people, vehicles and attributes		<b>Smart VCA</b> Accurate detect incidents	
<b>Deep Search</b> Available with supported platform		<b>RealSight Engine</b> Clear Visibility of people in any lighting	



# Great Image Performance Powered by RealSight Engine

## Clear visibility of people in any lighting

This feature ensures sharp, detailed capture of individuals, even in motion or challenging lighting conditions, without manual adjustments, the RealSight Engine automatically delivers clear images no matter day or night.



Clearly capture moving figures



See individuals without being affected by IR light reflections



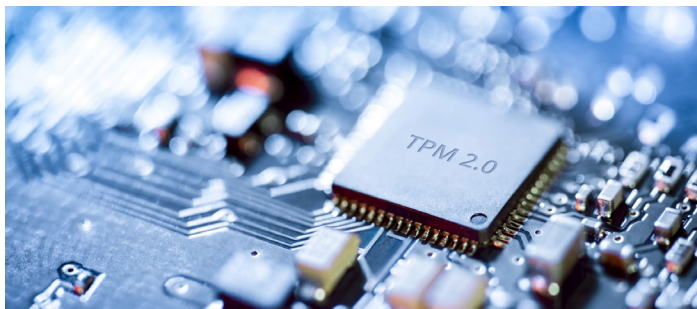
Clearly see portraits under backlight

## Advanced Analytics

### AI detection for accurate alarm

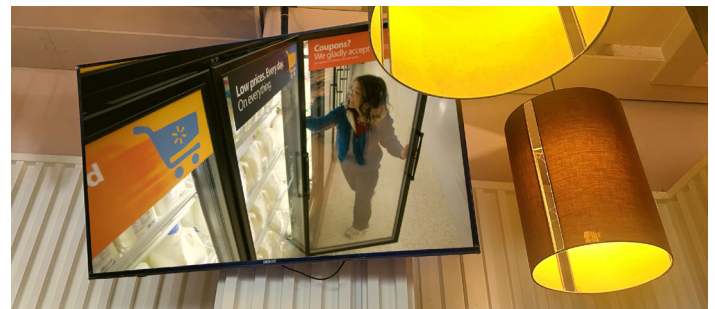
VIVOTEK Smart VCA offers precise object and attribute tracking, providing detailed video analytics for targeted monitoring and quick searches.

Built-in Analytics								Paid Analytics		
Smart Motion	Line Crossing	Intrusion	Loitering	Face	Crowd	Missing Object	Unattended Object	Running	Parking Detection	Restricted Zone



### FIPS 140-2 Certified TPM 2.0 Chip

The TPM 2.0 chip provides hardware encryption to protect confidential and cryptographic data, prevent unauthorized access, and also ensures system integrity for long-term security.



### HDMI output direct stream live footage

The camera is equipped with a built-in HDMI output port, allowing it to connect directly to the monitor via an HDMI cable. This setup eliminates the need for a video receiver to display surveillance footage, requires no additional wiring, and does not interfere with the existing decoration.

## Build for Easy Installation

### Simple installation

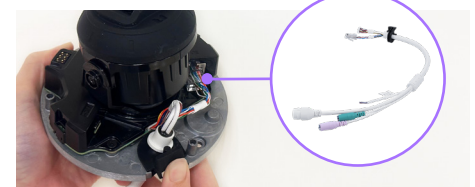
VIVOTEK's product design facilitates an easy and efficient installation process: only a single size of screwdriver is required to disassemble and install the camera device. Additionally, compatible accessories are provided to meet various installation requirements across different environments.



Effortless Cable Installation



Single (T10) Screw Mechanism



Interchangeable I/O Cable

# Complete Video Security with VIVOTEK Solution

Access and manage all devices and accounts through a single platform, providing accurate event monitoring and intuitive security system operation video investigation no matter where you are.



## Instant notification to aware incident |

Integrated with VORTEX, key individuals can be promptly notified through mobile push on VORTEX app or email, enabling proactive deterrent measures and the prevention of violations.

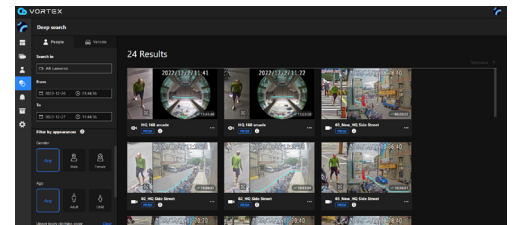


VORTEX app  
available on iOS and Android



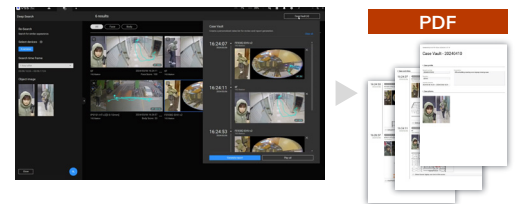
## Best way to search for footage – Deep Search |

Effortlessly find evidence without the need to access numerous video footages by using Deep Search, which enables efficient searching for video clips based on various attributes. View snapshots of people and their paths, eliminating the need for video replays.

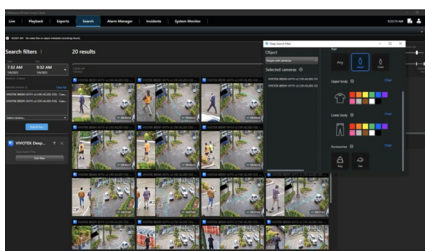


## Generate case report and export video in organized |

Case Vault helps user to manage footage found through Deep Search. Organize clips and export detailed case reports straight from search results, making case management easier.

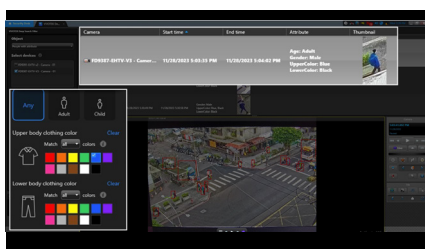


# Unified experience on Milestone and Genetec



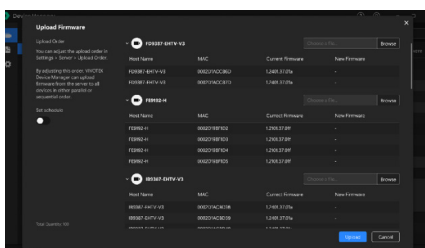
## Milestone XProtect

Easily enhance your Milestone XProtect with VIVOTEK's AI cameras for instant search evidence by attributes.



## Genetec Security Center

Optimize your Genetec Security Center with VIVOTEK's AI cameras for quick evidence searching through Deep Search and export search report.



## VIVOTEK Device Manager – Batch configuration


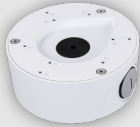



Device Manager quickly configure your cameras and NVRs. With our batch configuration, IP allocation, HTTPS/IEEE certificates, and firmware updates have never been easier, ensuring the system is always up-to-date and streamlined.










## Ordering Information

Models	FD9189-H-V3	FD9199-H	FD9389-EHV-V3	FD9389-EHTV-V3	FD9399-EHV	FD9399-EHTV	IB9389-EHV-V3	IB9389-EHTV-V3	IB9399-EHV	IB9399-EHTV
Form Factor	Indoor Fixed Dome		Outdoor Fixed Dome				Bullet			
Resolution	5MP	8MP	5MP	5MP	8MP	8MP	5MP	5MP	8MP	8MP
Lens	2.8mm	4.2mm	2.8mm	2.8-12mm	4.2mm	4.3-9.8mm	2.8mm	2.8-12mm	4.2mm	4.3-9.8mm
Aperture	F2.0	F1.6	F2.0	F1.6-3.3	F1.6	F1.6-2.6	F2.0	F1.6-3.3	F1.6	F1.6-2.6
IR illuminator	30m	30m	40m	40m	40m	40m	40m	40m	40m	40m
HDMI Output	✓	✓	✗	✗	✗	✗	✗	✗	✗	✗
Certification	✗	✗	IP66, IK10, NEMA 4X	IP66, IK10, NEMA 4X	IP66, IK10, NEMA 4X	IP66, IK10, NEMA 4X	IP67, IK10	IP67, IK10	IP67, IK10	IP67, IK10

## Accessories

Dome camera				Bullet camera
				
<b>AM-21A (V02)</b> L-shape Bracket	<b>AM-71B (V01&amp;V02)</b> Waterproof Conduit Box	<b>AO-014</b> Audio & IO cable for indoor	<b>AO-015</b> Audio & IO cable for outdoor	<b>AM-71C (V02)</b> Junction Box

## Recommend Solution

Hybrid Cloud Solution	
<p>VORTEX Camera (Not within scope)</p> <p>V-series AI Camera</p> 	<p>V-series Embedded NVR</p>  <p>VORTEX BY VIVOTEK</p>
On-Prem Solution	
<p>V-series AI Camera</p> 	<p>V-series Recording Server</p>  <p>V-series Embedded NVR</p>  <p>VAST Security Station</p> 
Open Platform Solution	
<p>V-series AI Camera</p> 	<p>milestone</p> <p>Genetec</p> <p>NxWitness VIDEO MANAGEMENT SYSTEM</p> <p>ONVIF®   GST</p>