



Network

Dome

TNV-C8011RW

5MP AI IR Wall Mount Camera



Key Features

- Analytics events based on AI engine
- AI based loitering detection and line crossing detection
- 5MP Wide Panoramic View (H: 175°) with Eye level monitoring
- 15m IR Viewable Length, 25° Tilt Lens
- Compact Size
- WDR 120dB, SSNR, WiseNR II (Based on AI engine)
- Business intelligence (People counting, Vehicle counting, Queue management, Heatmap)
- WiseStream III (Based on AI engine)
- Built in Microphone
- IP66, IK10

TNV-C8011RW

5MP AI IR Wall Mount Camera



Specifications

Video

Imaging Device	1/2.8" progressive 5 MP CMOS
Resolution	2592x1944, 2560x1440, 1920x1080, 1280x960, 1280x720, 800x600, 800x448, 720x576, 720x480, 640x480, 640x360, 320x240
Max. Framerate	H.265/H.264: Max. 30fps/25fps(60Hz/50Hz) MJPEG: Max. 30fps(@5MP Max. 5fps)
Min. Illumination	Color: 0.038Lux(F1.6, 1/30sec, 30IRE) BW: 0.0038Lux(F1.6, 1/30sec, 30IRE), 0Lux(IR LED on)
Video Out	USB: Micro USB Type B, 1280x720 for installation

Lens

Focal Length (Zoom Ratio)	1.6mm fixed focal
Max. Aperture Ratio	F1.6
Angular Field of View	H: 175- / V: 125- / D: 175-
Min. Object Distance	0.3M
Focus Control	Fixed

Pan / Tilt / Rotate

Pan / Tilt / Rotate Range	- / -25°~+25° / -
---------------------------	-------------------

Operational

Camera Title	Displayed up to 85 characters
Day & Night	Auto(ICR)
Backlight Compensation	BLC, WDR, SDR
Wide Dynamic Range	120dB
Digital Noise Reduction	SSNR V, WiseNR II (Based on AI engine)
Motion Detection	8ea, 8point Polygonal zones
Privacy Masking	32ea, 4point quadrangle zones
Gain Control	Low / Middle / High
White Balance	ATW / AWC / Manual / Indoor / Outdoor
LDC	Support
Electronic Shutter Speed	Minimum / Maximum / Anti flicker (1/5~1/12,000sec)
Digital PTZ	Support
Video Rotation	Flip, Mirror, Hallway view(90°/270°)

TNV-C8011RW

Analytics	Classified object type: Person/Face/ Vehicle Attributes: Vehicle(Type:car/bus/truck/motorcycle/bicycle) Support DetectionShot Analytics events based on AI engine - Motion detection*, Object detection, Virtual line*(Crossing/Direction), Virtual area*(Loitering/Intrusion/Enter/Exit) Analytics events - Defocus detection, Tampering, Shock detection, Virtual area(Appear/Disappear) * Some of the video analytics only works with people and vehicle detection
Business Intelligence	Based on AI engine: People counting, Vehicle counting, Queue management, Heatmap
Alarm Triggers	Analytics, Network disconnect
Alarm Events	When alarm trigger occurred - File upload(image) : e-mail/FTP - Notification : e-mail - Recording : SD/SDHC/SDXC or NAS recording at event triggers - Handover(PTZ preset, Send message by HTTP/HTTPS/TCP)
Audio In	Built-in mic only
IR Viewable Length	15m(49.21ft)
IR Wavelength	long-life 850 nm IR LED

Network

Ethernet	RJ-45(10/100BASE-T)
Video Compression	H.265/H.264: Main/High, MJPEG
Audio Compression	G.711 u-law /G.726 Selectable G.726(ADPCM) 8KHz, G.711 8KHz G.726: 16Kbps, 24Kbps, 32Kbps, 40Kbps AAC-LC: 48Kbps at 16KHz
Smart Codec	Manual(5ea area), WiseStreamIII(Based on AI engine)
Video Quality Adjustment	H.264/H.265: Target bitrate level control MJPEG: Quality Level control
Bitrate Control	H.264/H.265: CBR or VBR MJPEG: VBR
Streaming	Unicast(20 users) / Multicast Multiple streaming(Up to 5 profiles)
Protocol	IPv4, IPv6, TCP/IP, UDP/IP, RTP(UDP), RTP(TCP), RTCP, RTSP, NTP, HTTP, HTTPS, SSL/TLS, DHCP, FTP, SMTP, ICMP, IGMP, SNMPv1/v2c/v3(MIB-2), ARP, DNS, DDNS, QoS, UPnP, Bonjour, LLDP, CDP, SRTP (TCP, UDP Unicast), MQTT
Application Programming Interface	ONVIF Profile S/G/T/M SUNAPI(HTTP API)

Security

OS / Firmware Protect	Secure boot, Signed firmware, Firmware encryption
User authentication	Digest Authentication, Prevent brute-force attack
Network authentication	802.1X Authentication(EAP-TLS, EAP-LEAP, EAP-PEAP MSCHAPv2)
Secure Communication	HTTPS, SRTP, WSS(Websocket secure)
Access Control	Access control based on IP address
Data Protect	Authentication information encryption, ZIP compression encryption
Audit	User Access/System/Event log management
Device ID	Device Certificate(Hanwha Private Root CA)
Secure Storage	SDcard partition encrypt

General

Webpage Language	English, Korean, Chinese, French, Italian, Spanish, German, Japanese, Russian, Portuguese, Czech, Polish, Turkish, Dutch, Hungarian, Greek
Edge Storage	Micro SD/SDHC/SDXC 1slot 256GB
Memory	2GB RAM, 1GB Flash

Design and specifications are subject to change without notice. The latest product information / specification can be found at HanwhaVision.com

Hanwha Vision is formerly known as Hanwha Techwin.

Environmental & Electrical

Operating Temperature / Humidity	-30°C ~ +55°C(-22°F ~ +131°F) / Less than 95% RH
Storage Temperature / Humidity	-30°C ~ +60°C(-22°F ~ +140°F) / Less than 95% RH
Certification	IP66, IK10
Input Voltage	PoE(IEEE802.3af, Class3)
Power Consumption	Max 11.5W / Typ 4.8W

Mechanical

Color / Material	White / Aluminum Hard-coated dome bubble
RAL Code	RAL9003
Product Dimensions / Weight	80(W)x167(H)x57(D)mm(3.15x6.56x2.24"), 600g(1.32 lb)
Compatible Conduit hole / Gangbox	Conduit hole : None Gangbox : Single
Tilt Mount	SBV-140TBW

Certifications & Standards

EMC	EN 55032:2015/A11:2020 EN 50130-4:2011/A1:2014 FCC 47 CFR Part 15, Subpart B Class A IC Regulation ICES-003 Issue 7 Class A KS C 9832:2023 KS C 9835:2019 AS/NZS CISPR 32 Class A VCCI CISPR 32 Class A
Safety	UL 62368-1, CSA C22.2 NO. 62368-1 KC 62368-1
Environment	IEC EN 60529: 1989+A1:1999+A2:2013 IEC EN 62262:2005 IEC EN 63000:2018

DORI (EN62676-4 standard)

Detect (25PPM/ 8PPF)	30.05m (98.59ft)
Observe (63PPM/ 19PPF)	12.02m (39.44ft)
Recognize (125PPM/ 38PPF)	6.01m (19.72ft)
Identify (250PPM/ 76PPF)	3.00m (9.84ft)

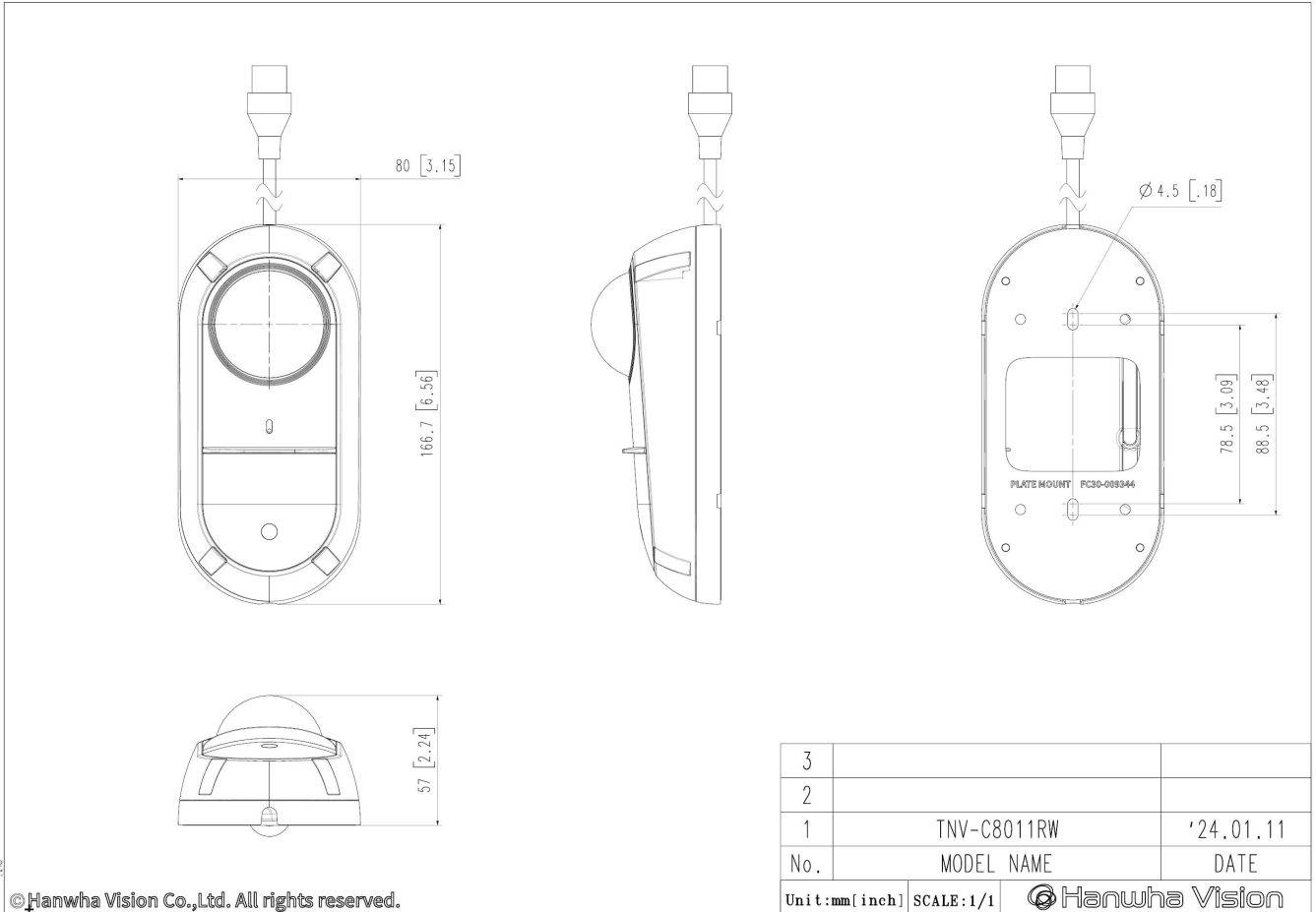
TNV-C8011RW

5MP AI IR Wall Mount Camera



CAD

Unit:mm [inch]



© Hanwha Vision Co.,Ltd. All rights reserved.