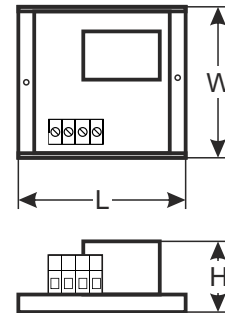
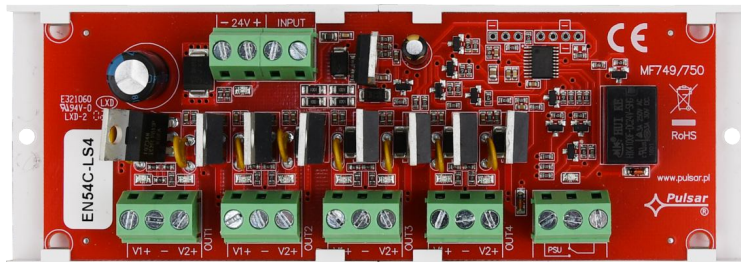


CODE: **EN54C-LS4** v.1.0/1  
 NAME: **EN54C-LS4 sequential module for actuators without return spring**

EN



### Features:

- supply voltage 20 ÷ 30 V DC
- designed for cylinders without return spring
- 4x2 outputs independently secured with polymer fuses
- parametric trigger input INPUT (2x4,7 kΩ)
- technical output of failure
- optical indication of failure
- dedicated to fire alarm power supplies of EN54C series
- warranty - 5 years from the production date

### DESCRIPTION

The sequential module is designed for use with electric actuators without return spring used for fire dampers and smoke vents. These devices are used in fire alarm systems and smoke and heat control systems.

When switching on the electric actuator, a short-term current surge, exceeding its rated current, may occur. If multiple electric actuators are connected, the above-mentioned surge current poses a risk of incorrect operation of the power supply (e.g. triggering the protection of output circuit), despite not exceeding the current capacity of the power supply.

The sequential switching module causes the receivers connected to its outputs to be sequentially switched, with a delay of 100 ms. Thanks to this solution, the surge current is reduced to the value ensuring correct operation of the power supply. Thus, it enables safe connection of additional actuators. All outputs are independently protected by PTC polymer fuses and have LED diodes signaling the activation of each output.

The module is controlled by a control device (e.g. a CSP control panel) configuring the resistance at the INPUT connector. The technical output of failure indicates failures at the parametric INPUT input.

Supply voltage	20 ÷ 30 V DC
Current consumption	20 ÷ 30mA @ U <sub>in</sub> =20 ÷ 30 V DC
Output voltage	U <sub>AUX</sub> = U <sub>IN</sub> (according to supply voltage)
Output current	4 x 0,5 A
Number of power outputs	4 (OUT1 ÷ OUT4)
Overload protection	polymer fuse
Optical signaling of operation	8x LEDs - outputs condition V1÷V2 (OUT1÷OUT4, green LEDs) PSU - failure indication (red LED)
Control input	INPUT - parametric, 2x4,7 kΩ
Operating conditions	2nd environmental class, -10°C ÷50°C
Dimensions (LxWxH)	150 x 52,5 x 27 [mm]
Net/gross weight	0,11kg / 0,13kg
Storage temperature	-20°C...+60°C
Additional equipment	Screws x 2

Schematic diagram of the connection of the EN54C-LS4 sequencer module with the power supply of the EN54C series.

