

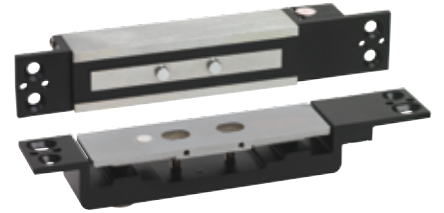
VELMAG™ MORTICE ELECTROMAGNETIC LOCKS (SHEARLOCK)

540 and 1000 DaN

- Mounting on single or double action door
- Horizontal or vertical installation
- Mortice or surface-mount (with SH540BT or SH1000BT)
- Locked / unlocked status by HALL sensor (CTC model)



SH540



SH1000CTC

CHARACTERISTICS

		SH540 / SH540CTC	SH1000CTC
Dimensions H x W x D	Electromagnet	30 x 180 x 27,1 mm	30 x 182 x 25 mm
	Armature plate	30 x 180 x 33 mm	30 x 182 x 23,6 mm
	Housing	27 x 182 x 35,5 mm	231,40 x 46 x 45 mm
	U bracket	48 x 182 x 14 mm	231 x 46 x 21 mm
	12-24V DC		SH540 / SH540CTC 420-210 mA SH1000CTC 900 mA - 190 mA
	SH540 / SH540CTC -10 +60 °C SH1000CTC -30 +50 °C		SH540 / SH540CTC 30V DC-3 A SH1000CTC 24V DC-1 A
	20		SH540 / SH540CTC 540* SH1000CTC 1000*

* Maximal theoretical holding forces, for an implementation meeting the optimum laying conditions

SH540	Shearlock electromagnetic lock 540 DaN 12-24V DC	1,2 kg
SH540CTC	Shearlock electromagnetic lock 540 DaN 12-24V DC + contact 10,2-27,6 VDC	1,2 kg
SH540BT	Surface housing for SH540 (2 pcs) with 4 spacers	0,5 kg
SH540U	U bracket for glass door for SH540BT - by pair Glass thickness : 14 mm max.	0,4 kg
SH1000CTC	Shearlock electromagnetic lock 12-24V DC + contact 1000 DaN	1,2 kg
SH1000U	U bracket for glass door for SH1000BT - by pair	0,5 kg
SH1000BT	Surface housing for SH1000CTC (2 pcs)	0,4 kg

Customs code
83014019

