

Never miss a thing



**WISeNET P** series  
Premium Multi-sensor cameras

## Cover wide areas with one camera

Wisenet P series multi-sensor cameras are equipped with multiple sensors, which means that it can effectively monitor wide areas with just one camera.

- Multi-directional cameras can simultaneously monitor multiple directions without any blind spots. When it is combined with a PTZ camera, it provides a detailed view of the desired image through its effective zoom-in function.
- Panoramic cameras provide a wide panoramic view within a single camera by merging 4 images from each sensors.

By installing Wisenet multi-sensor cameras, the cost of system installation and maintenance is reduced while successfully monitoring wide areas.

### Multi-directional Camera



**PNM-9084QZ**  
8MP (2MP x 4ea)



**PNM-9084RQZ/  
9085RQZ**  
9084RQZ : 8MP (2MP x 4ea)  
9085RQZ : 20MP (5MP x 4ea)



**PNM-7000VD/  
9000VD**  
4MP (2MP x 2ea)/  
10MP (5MP x 2ea)  
with selectable lens



**PNM-9000VQ**  
Max. 20MP  
(5MP/2MP x 4ea)  
with selectable lens



**PNM-9080VQ**  
8MP (2MP x 4ea)



**PNM-9081VQ**  
20MP (5MP x 4ea)

### Multi-directional Camera with PTZ



**PNM-9320VQP**  
Max. 22MP  
(2MP 32x PTZ +  
5MP/2MP x 4ea)  
with selectable lens

### Panoramic Camera



**PNM-9020V**  
7.3MP (2MP x 4ea)



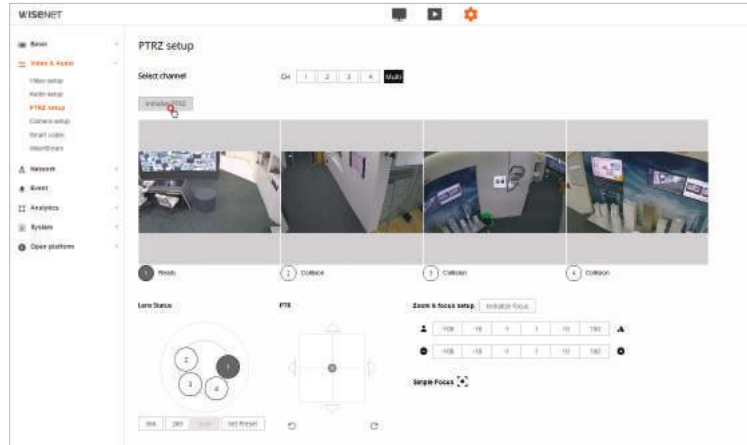
**PNM-9030V**  
20MP (5MP x 4ea)

## Remote motorized PTRZ control for easy installation

The PNM-9084QZ has become more compact and lighter to make installation a lot easier even on a ladder. Both PNM-9084RQZ and PNM-9085RQZ support remote PTRZ (Pan, tilt, rotate and zoom) setup, saving installers time and effort of making adjustments on a ladder to change the setting.



PTRZ (Pan, Tilt, Rotate and Zoom)



PTRZ set up on Wisenet webviewer

## Built-in IR sensor for monitoring in low light environment

The PNM-9084RQZ/9085RQZ has built-in IR sensors to each of the four lenses. Each lens and its IR sensors move together when users control the lenses, producing clear images up to 30 meters even in low-light environments



built-in IR sensor



Actual footage of PNM-9085RQZ

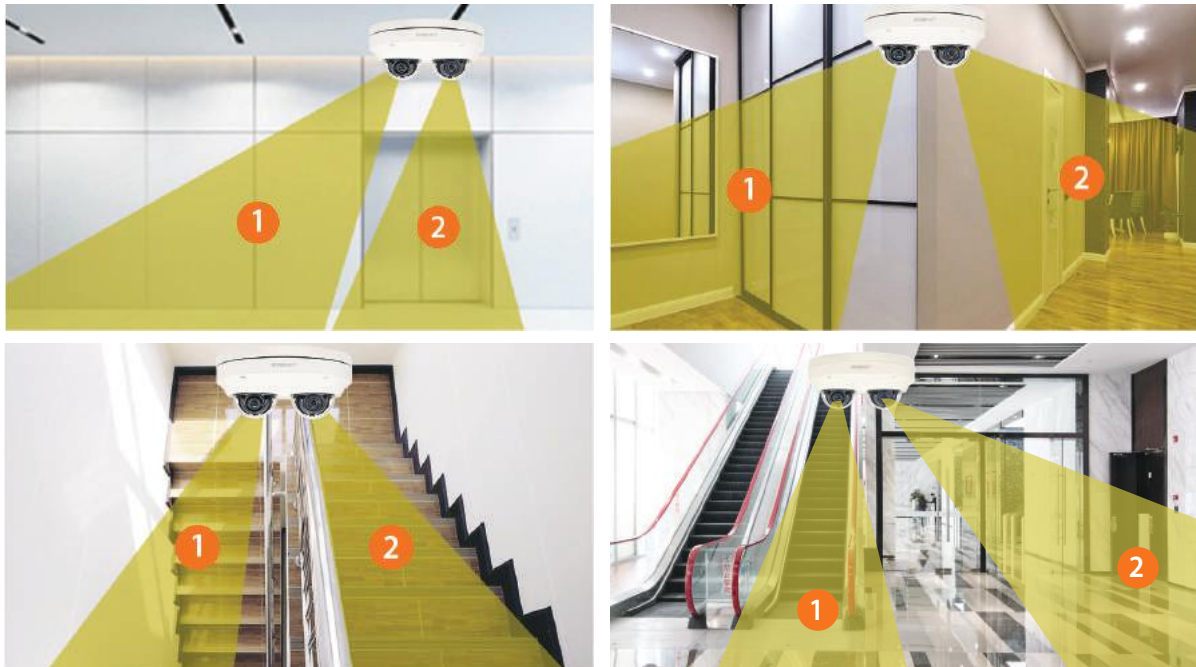
## Multiple view modes

Choose from a variety of viewing options that fit your needs by using the broad line-up of Wisenet multi-sensor cameras.

### 2CH Multi-directional Camera

- PNM-7000VD 4MP (2MP x 2ea) with selectable lens
- PNM-9000VD 10MP (5MP x 2ea) with selectable lens

2CH multi-directional cameras are able to simultaneously monitor two areas through multiple angles by installing two camera lenses in one surveillance camera, which removes the needs for multiple corners and reduces TCO (Total Cost of Ownership).



### Exchangeable dual lens

According to the desired direction and viewing angle, you are able to select 2MP 2.4mm/2.8mm/3.6mm/6.0mm lenses for PNM-7000VD and 5MP 3.7mm/4.6mm/7.0mm lenses for PNM-9000VD. The camera's video feature enables clear and sharp monitoring, making it perfect for surveillance of large spaces such as parks, parking lots and shopping malls.

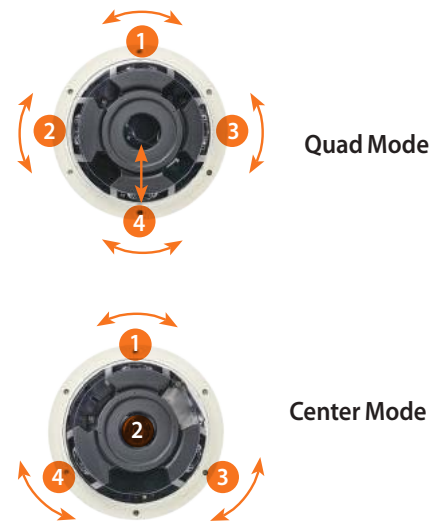
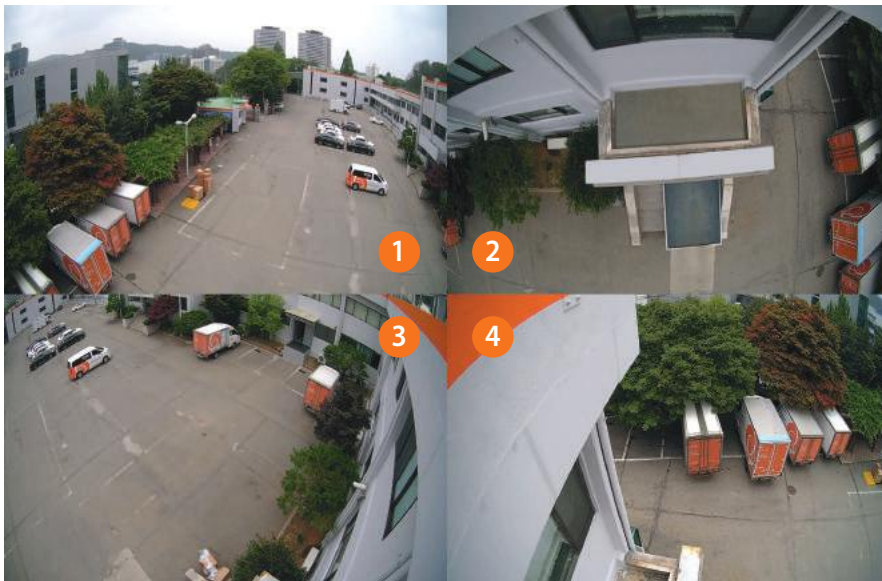


PNM-7000VD with selectable lenses

## 4CH Multi-directional Camera

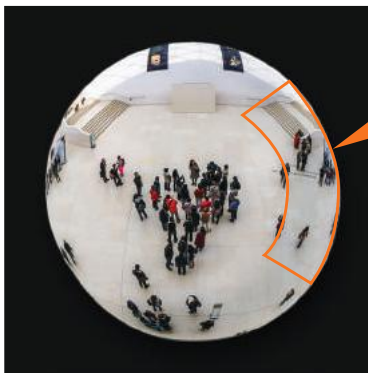
- PNM-9081VQ 20MP (5MP x 4ea)
- PNM-9080VQ 8MP (2MP x 4ea)
- PNM-9000VQ Max. 20MP (5MP/2MP x 4ea) with selectable lens

Multi-directional cameras have four sensors in one camera. The four sensors in the multi-directional camera move independently on top of the tracks enabling users to monitor a complete 360° view simultaneously without any blind spots. In addition, one of the sensors can easily be removed and attached in the center of the camera, allowing for flexible set-up.



## Natural and clearer image

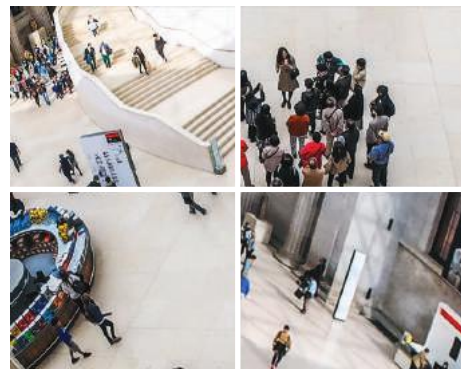
When using a fisheye camera, it brings low image quality and image distortion at each edge of the image. However, the Multidirectional camera with 4 sensors brings almost non image distortion and shows clearer image at each edge of the image.



Fisheye Camera



Low image quality and image distortion at the edges.



Multi-directional Camera

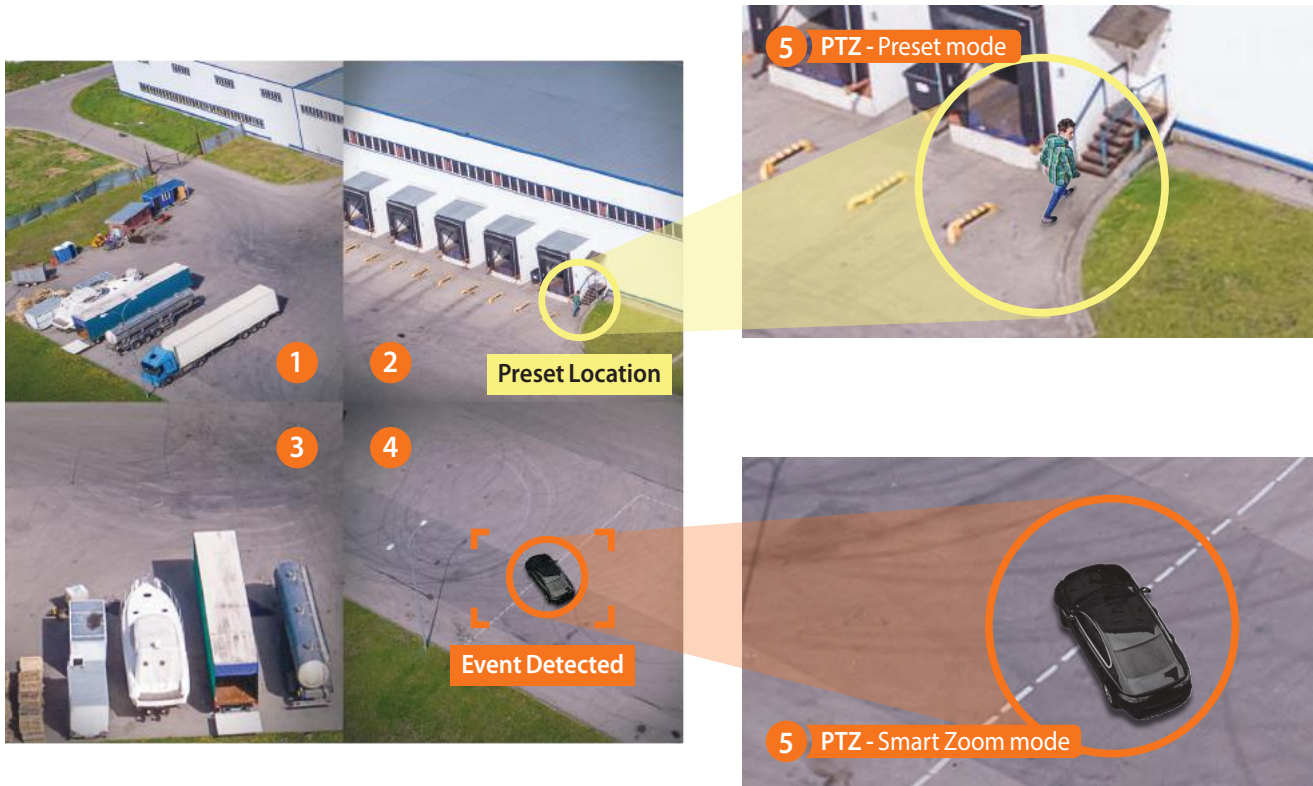
Clearer image and almost non distortion at the edges.

## Multi-directional Camera with PTZ

· PNM-9320VQP Max. 22MP (2MP 32x PTZ + 5MP/2MP x 4ea) with selectable lens

PNM-9320VQP is a 5CH camera that combines four sensor multi-directional camera and 2MP 32x PTZ camera. The multi-directional camera can monitor a 360° wide area while the PTZ camera zooms in to the desired area for closer inspection.

PNM-9320VQP has a built-in 100/1000 SFP slots in its installation base which sends high resolution images to distanced locations through a network without any data damage.



When an event is detected, the PTZ can either zoom into the event or the preset location by using the advanced handover to PTZ function.

### Advanced handover to PTZ

PNM-9320VQP showcases the best of 2MP 32x PTZ camera through an advanced handover function composed of preset mode and smart zoom mode. When the multi-directional camera detects an event, it automatically links to PTZ camera which carries out zoom-in and track functions.

When using preset mode, PTZ camera zooms in to the position that the users preset, while smart zoom mode automatically zooms into the area where event is detected. Create your own monitoring scenario that fit your needs by using the two modes of advanced handover to PTZ function.

## Panoramic Camera

- PNM-9020V 7.3MP (2MP x 4ea)
- PNM-9030V 20MP (5MP x 4ea)

Panoramic cameras provide a wide panoramic view within a single camera instead of installing 4 cameras. It offers a seamless single image by merging 4 images from each sensors.



### Single Panorama image (PNM-9020V)

PNM-9020V is a single channel camera that provides 7.3MP of panoramic image with 180° horizontal and 84° vertical field of view. The camera provides a single piece of high resolution panoramic view by stitching 4 images to monitor a wide range of area.



### Single Panorama + Original + Crop images (PNM-9030V)

PNM-9030V can simultaneously stream a total of 7CH : a single panoramic 20MP image merged from the 4 original images, 4 of the original 5MP images from each sensor, and 2 of the 2MP crop images.



### 180° and 220° view mode for Panorama images (PNM-9030V)

The panoramic image of PNM-9030V support both 180° and 220° view modes.

- The 180° mode provides 180° horizontal and 70° vertical field of view, which maximizes the effectiveness with its vast vertical viewing angle.
- The 220° mode provides 220° horizontal and 52° vertical field of view, which can help users to monitor areas that need wider viewing angle such as corners of the building.

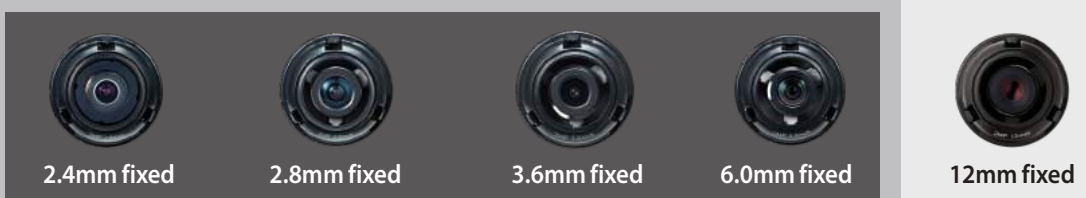


## Selectable and changeable multiple lens (PNM-7000VD/9000VD/9000VQ/9320VQP)

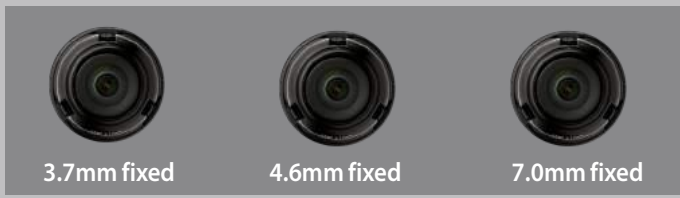
Choose a wide variety of lenses from 2MP 2.4~12.0mm to 5MP 7.0mm for each sensors in PNM-7000VD/9000VD/9000VQ/9320VQP. Due to the wide variety of lens selection, users can create the most optimal field of view for their desired monitoring areas.



1/2.8"  
2MP Lens



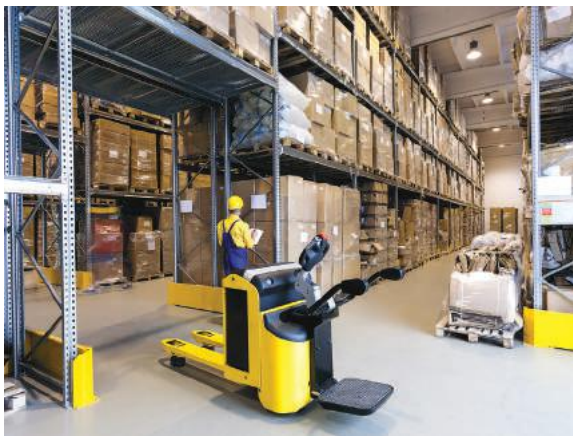
1/1.8"  
5MP Lens



※The applicable lens differs for each camera.

## Optimized for indoor and outdoor environments

Wisenet P series panoramic and multi-directional cameras are suitable to monitor even the smallest details in a wide area. They are ideal for applications such as warehouse, shopping mall entrances, train stations, parking lots, and more supporting IP66, IK10.



- Warehouse
- City Surveillance
- Parking lot
- Square
- Crossroads
- Mall entrance
- Airport
- Stadium
- Distribution center
- Train station



## Improve bandwidth by up to 99% using WiseStream II

When Hanwha Techwin's original video compression technology WiseStream II is combined with H.265 compression, the bitrate data is reduced by up to 99% compared to current H.264 technology. The costs of configuring and maintaining the system are also greatly reduced, while still maintaining the same pixels and high quality.



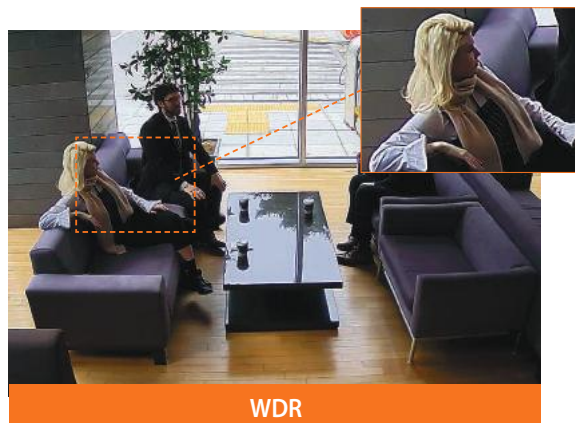
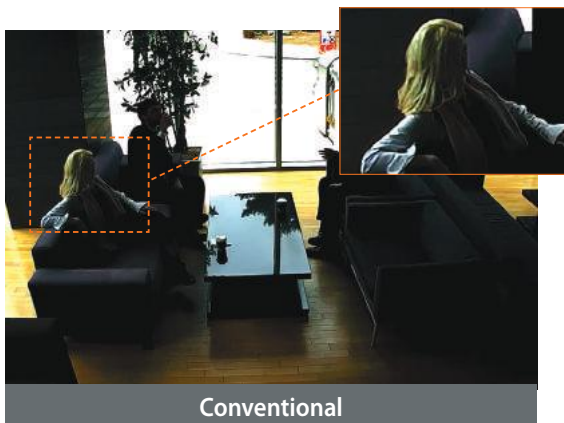
WiseStream II OFF : 7160kbps  
**WiseStream II ON : 74kbps**



WiseStream II OFF : 7260kbps  
**WiseStream II ON : 1817kbps**

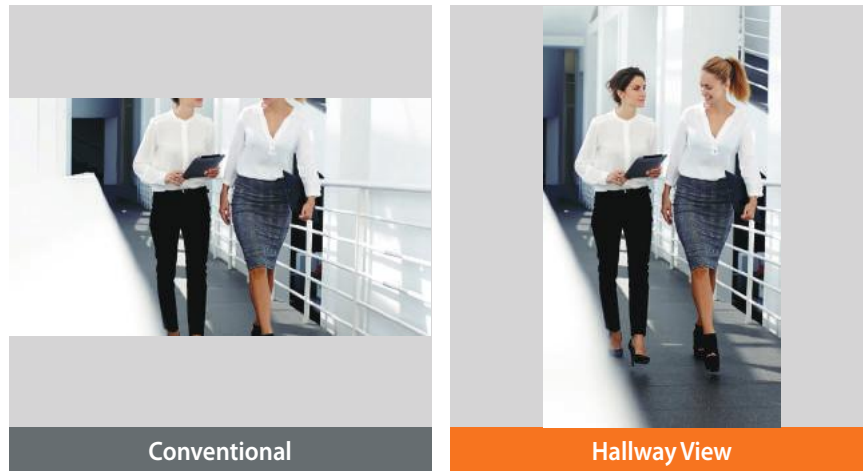
## True WDR performance

Even with backlight, Wisenet's cutting-edge WDR technology addresses a limitation found in conventional WDR cameras while producing clear and vivid images. WDR improves the accuracy of an image by resolving the difference in brightness.



## Hallway view for monitoring vertical shaped areas

In a vertical shaped environment, such as corridors, hallways, tunnels, or aisles, traditional horizontal shaped videos focus on unnecessary edges of the area causing bandwidth and storage waste. The Hallway view, 3 : 4 and 9 : 16 aspect ratio image is created : a vertically oriented video that maximizes image quality in narrow locations.



## A comprehensive range of intelligent video/ audio analytics

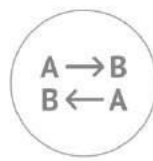
Wisenet P series multi-sensor cameras support a variety of exclusive video and audio analytics, providing enhanced monitoring solutions and market intelligence.



Tampering



Loitering



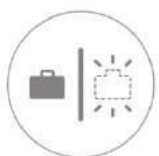
Directional detection



Fog & Dust detection



Virtual line



Appear/Disappear



Enter/Exit



Face detection



Motion detection

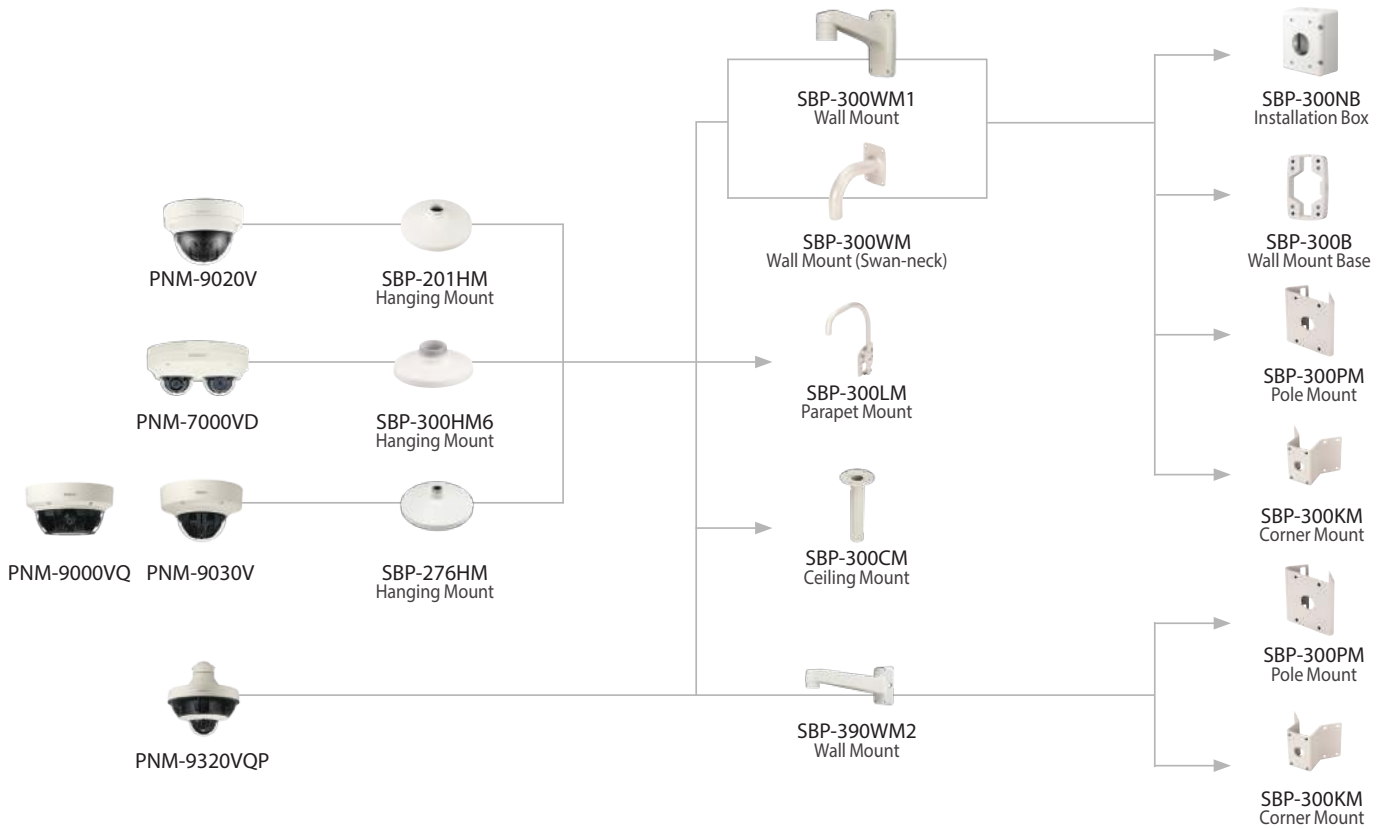


Audio detection

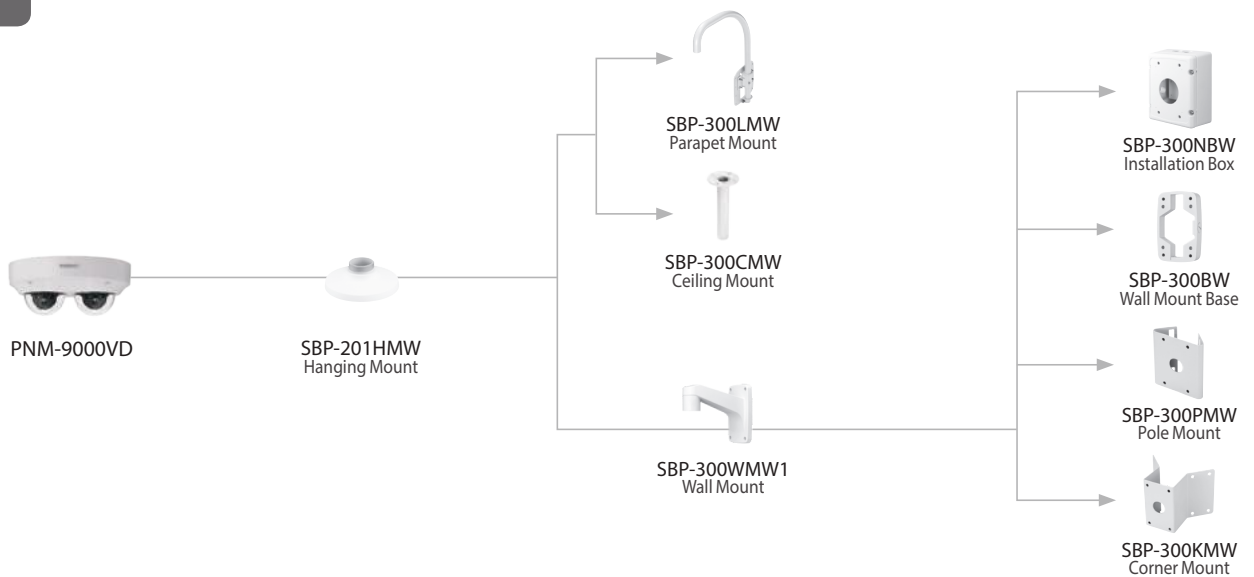
※Supported analytics may vary depending on the product.

# Accessory configuration

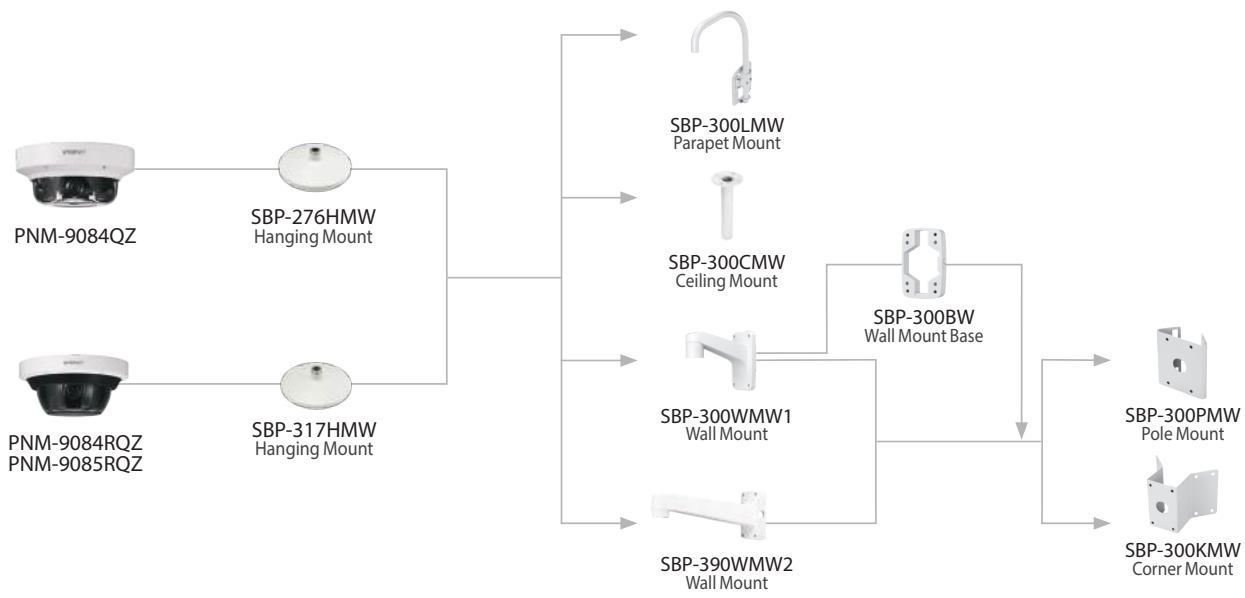
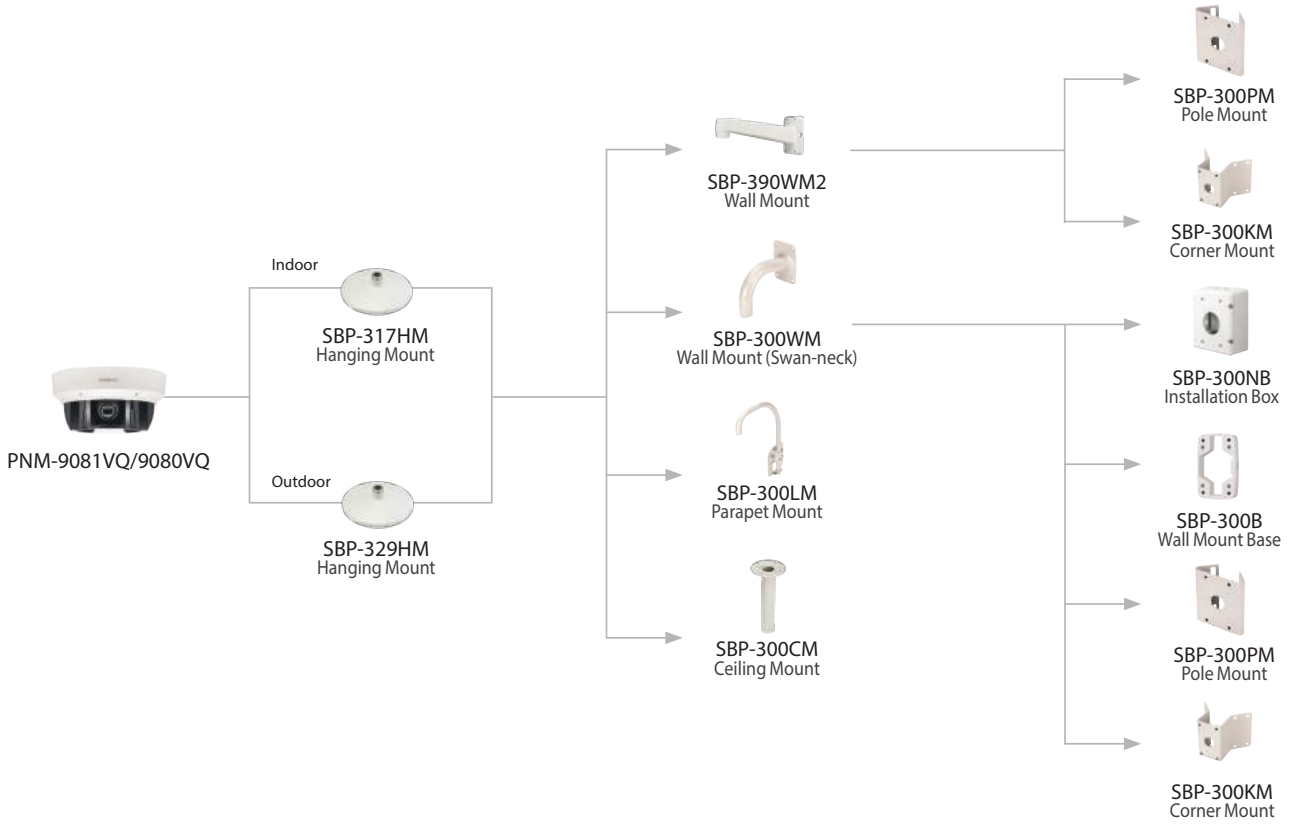
## Ivory



## White



# Accessory configuration



# Product Comparison



**PNM-9084QZ**  
8MP Multi-directional Camera



**PNM-9084RQZ**  
8MP IR PTRZ Multi-directional Camera



**PNM-9085RQZ**  
20MP IR PTRZ Multi-directional Camera

|                                   |   |   |  |
|-----------------------------------|---|---|--|
| Imaging Device                    | 1/2.8" 2MP x 4CH  | 1/2.8" 2MP x 4CH  | 1/1.8" 5MP x 4CH   |
| Min. Illumination                 | Color : 0.08lux(F2.2)<br>BW : 0.008lux(F2.2)  | Color : 0.05lux(F1.6)<br>BW : 0Lux(IR LED on)   | Color : 0.11lux(F1.6)<br>BW : 0Lux(IR LED on)  |
| Video Output                      | -   | -   | -  |
| Focal Length                      | 3 ~ 6mm (2x)<br>motorized varifocal   | 3.2~10mm(3.1x)<br>motorized varifocal   | 4.13~9.4mm(2.3x)<br>motorized varifocal  |
| Angular Field of View             | H : 107° (Wide) ~ 56.3° (Tele) /<br>V : 57° (Wide) ~ 31.5° (Tele) /<br>D : 126° (Wide) ~ 64.3° (Tele) | H : 109.0°(Wide)~33.2°(Tele) /<br>V : 57.4°(Wide)~18.7°(Tele) /<br>D : 132.0°(Wide)~38.0°(Tele) | H : 87.58°(Wide)~37.34°(Tele) /<br>V : 64.58°(Wide)~28.04°(Tele) /<br>D : 112.46°(Wide)~46.85°(Tele) |
| Pan / Tilt / Rotate               | 0° ~ 360° / 0° ~ 90° / 0° ~ 90°   | 0~360° / 30~80° / 0~90°   | 0~360° / 35~80° / 0~90°  |
| IR Viewable Length                | -   | 30m(98.42ft)  | 30m(98.42ft)   |
| Day & Night                       | Auto (ICR)  | Auto (ICR)  | Auto (ICR)   |
| Wide Dynamic Range                | 120dB   | 120dB   | 120dB  |
| Digital Noise Reduction           | SSNRV   | SSNRV   | SSNRV  |
| Digital Image Stabilization       | Support   | Support   | Support  |
| Analytics                         | Intelligent analytics<br>Audio detection  | Intelligent analytics<br>Audio detection  | Intelligent analytics<br>Audio detection   |
| Business Intelligence             | -   | -   | -  |
| Alarm I/O                         | 1 / 1   | 1 / 1   | 1 / 1  |
| Audio I/O                         | Selectable(mic in/line in) / Line out   | Selectable(mic in/line in) / Line out   | Selectable(mic in/line in) / Line out  |
| Video Compression                 | H.265, H.264, MJPEG   | H.265, H.264, MJPEG   | H.265, H.264, MJPEG  |
| Resolution / Max. Frame Rate      | 2MP / 60fps   | 2MP / 60fps   | 5MP / 30fps  |
| WiseStream                        | WiseStream II   | WiseStream II   | WiseStream II  |
| Streaming                         | Up to 10 profiles   | Up to 10 profiles   | Up to 10 profiles  |
| Edge Storage                      | Micro SD/SDHC/SDXC  | Micro SD/SDHC/SDXC  | Micro SD/SDHC/SDXC   |
| Application Programming Interface | ONVIF profile S/T, SUNAPI,<br>Wisenet Open Platform   | ONVIF profile S/T, SUNAPI,<br>Wisenet Open Platform   | ONVIF profile S/T, SUNAPI,<br>Wisenet Open Platform  |
| Operating Temperature             | -40°C ~ +55°C<br>(-40°F ~ +131°F)<br>* Start up above -35°C (-31°F)                                   | -40°C ~ +55°C<br>(-40°F ~ +131°F)   | -40°C ~ +55°C<br>(-40°F ~ +131°F)  |
| Certification                     | IP66, IK10, NEMA4X  | IP66, IK10, NEMA4X  | IP66, IK10, NEMA4X   |
| Power Consumption                 | HPoE : Max 33W<br>typical 20W   | Max : 42W<br>Typical : 28W  | Max : 45W<br>Typical : 32W   |
| Dimensions (WxHxD) / Weight       | Ø251 x 116.5mm<br>(Ø9.88" x 4.59")<br>3Kg (6.6 lb)  | Ø315x145.9mm<br>(12.4" x 5.74")<br>5.2kg(11.46lb)   | Ø315 x 145.9mm<br>(12.4" x 5.74")  |
| Additional Features               | Motorized PTRZ, Hallway view, Defog   | Motorized PTRZ  | Motorized PTRZ   |

# Product Comparison



**PNM-7000VD**  
4MP Multi-directional Camera



**SLA-2M6000D**  
2MP lens for PNM-7000VD



**SLA-2M3600D**  
2MP lens for PNM-7000VD



**SLA-2M2800D**  
2MP lens for PNM-7000VD



**SLA-2M2400D**  
2MP lens for PNM-7000VD

|                                   | PNM-7000VD<br>4MP Multi-directional Camera                     | SLA-2M6000D<br>2MP lens for PNM-7000VD            | SLA-2M3600D<br>2MP lens for PNM-7000VD            | SLA-2M2800D<br>2MP lens for PNM-7000VD            | SLA-2M2400D<br>2MP lens for PNM-7000VD            |
|-----------------------------------|--|---|---|---|---|
| Imaging Device                    | -  | 1/2.8" 2MP CMOS                                   | 1/2.8" 2MP CMOS                                   | 1/2.8" 2MP CMOS                                   | 1/2.8" 2MP CMOS                                   |
| Min. Illumination                 | -  | Color : 0.055Lux (F2.0)<br>B/W : 0.055Lux (F2.0)  | Color : 0.055Lux (F2.0)<br>B/W : 0.055Lux (F2.0)  | Color : 0.055Lux (F2.0)<br>B/W : 0.055Lux (F2.0)  | Color : 0.055Lux (F2.0)<br>B/W : 0.055Lux (F2.0)  |
| Video Output                      | CVBS 1.0Vp-p   | -   | -   | -   | -   |
| Focal Length                      | -  | 6.0mm fixed                                       | 3.6mm fixed                                       | 2.8mm fixed                                       | 2.4mm fixed                                       |
| Angular Field of View             | -  | H: 50.4° / V: 28.8° / D: 58.1°                    | H: 94.8° / V: 49.3° / D: 114.3°                   | H: 107.4° / V: 62.2° / D: 122.0°                  | H: 135.4° / V: 71.2° / D: 161.6°                  |
| Pan / Tilt / Rotate               | -  | ±176° / 0° ~ 65° / ±90°                           | ±176° / 0° ~ 54° / ±90°                           | ±176° / 0° ~ 50° / ±90°                           | ±176° / 0° ~ 30° / ±90°                           |
| IR Viewable Length                | -  | -   | -   | -   | -   |
| Day & Night                       | Auto (Electrical)  | Auto (Electrical)                                 | Auto (Electrical)                                 | Auto (Electrical)                                 | Auto (Electrical)                                 |
| Wide Dynamic Range                | 150dB  | 150dB   | 150dB   | 150dB   | 150dB   |
| Digital Noise Reduction           | SSNRV  | -   | -   | -   | -   |
| Digital Image Stabilization       | Support  | -   | -   | -   | -   |
| Analytics                         | Intelligent analytics  | -   | -   | -   | -   |
| Business Intelligence             | -  | -   | -   | -   | -   |
| Alarm I/O                         | -  | -   | -   | -   | -   |
| Audio I/O                         | -  | -   | -   | -   | -   |
| Video Compression                 | H.265, H.264, MJPEG  | -   | -   | -   | -   |
| Resolution / Max. Frame Rate      | 2MP / 60fps  | -   | -   | -   | -   |
| WiseStream                        | WiseStream II  | -   | -   | -   | -   |
| Streaming                         | Up to 10 Profiles  | -   | -   | -   | -   |
| Edge Storage                      | SD/SDHC/SDXC   | -   | -   | -   | -   |
| Application Programming Interface | ONVIF Profile S, SUNAPI  | -   | -   | -   | -   |
| Operating Temperature             | -40°C ~ +55°C<br>(-40°F ~ +131°F)                              | -   | -   | -   | -   |
| Certification                     | IP66, IK10   | -   | -   | -   | -   |
| Power Consumption                 | PoE: 12.95W  | -   | -   | -   | -   |
| Dimensions (WxHxD) / Weight       | Ø161.0 x 73.0mm<br>(Ø6.34" x 2.87")<br>840g (1.85 lb)          | Ø35.5 x 27.9mm<br>(Ø1.4" x 1.1")<br>27g (0.06 lb) | Ø35.5 x 27.9mm<br>(Ø1.4" x 1.1")<br>27g (0.06 lb) | Ø35.5 x 27.9mm<br>(Ø1.4" x 1.1")<br>27g (0.06 lb) | Ø35.5 x 27.9mm<br>(Ø1.4" x 1.1")<br>27g (0.06 lb) |
| Additional Features               | Exchangeable<br>2ea x 2MP lens modules,<br>Hallway view, Defog | -   | -   | -   | -   |



**PNM-9000VD**  
10MP Multi-directional Camera



**SLA-5M7000D**  
5MP lens for PNM-9000VD



**SLA-5M4600D**  
5MP lens for PNM-9000VD



**SLA-5M3700D**  
5MP lens for PNM-9000VD

|                                   |   |  |  |  |
|-----------------------------------|---|--|--|--|
| Imaging Device                    | -   | 1/1.8" 5MP CMOS                                      | 1/1.8" 5MP CMOS                                      | 1/1.8" 5MP CMOS                                      |
| Min. Illumination                 | -   | Color : 0.16Lux (F1.6)<br>B/W : 0.16Lux (F1.6)       | Color : 0.16Lux (F1.6)<br>B/W : 0.16Lux (F1.6)       | Color : 0.16Lux (F1.6)<br>B/W : 0.16Lux (F1.6)       |
| Video Output                      | CVBS 1.0Vp-p  | -  | -  | -  |
| Focal Length                      | -   | 7.0mm fixed  | 4.6mm fixed  | 3.7mm fixed  |
| Angular Field of View             | -   | H : 50.7° / V : 37.8° / D : 63.8°                    | H : 77.9° / V : 57.9° / D : 98.7°                    | H : 97.5° / V : 71.9° / D : 126.2°                   |
| Pan / Tilt / Rotate               | -   | ±90° / 36° ~ 73° / ±180°                             | ±90° / 36° ~ 73° / ±180°                             | ±90° / 36° ~ 73° / ±180°                             |
| IR Viewable Length                | -   | -  | -  | -  |
| Day & Night                       | Auto (Electrical)   | Auto (Electrical)                                    | Auto (Electrical)                                    | Auto (Electrical)                                    |
| Wide Dynamic Range                | 120dB   | 120dB  | 120dB  | 120dB  |
| Digital Noise Reduction           | SSNRV   | -  | -  | -  |
| Digital Image Stabilization       | Support   | -  | -  | -  |
| Analytics                         | Intelligent analytics                                       | -  | -  | -  |
| Business Intelligence             | -   | -  | -  | -  |
| Alarm I/O                         | -   | -  | -  | -  |
| Audio I/O                         | -   | -  | -  | -  |
| Video Compression                 | H.265, H.264, MJPEG   | -  | -  | -  |
| Resolution / Max. Frame Rate      | 5MP / 30fps   | -  | -  | -  |
| WiseStream                        | WiseStream II   | -  | -  | -  |
| Streaming                         | Up to 10 Profiles   | -  | -  | -  |
| Edge Storage                      | Micro SD/SDHC/SDXC  | -  | -  | -  |
| Application Programming Interface | ONVIF Profile S/G, SUNAPI,<br>Wisenet open platform         | -  | -  | -  |
| Operating Temperature             | -40°C ~ +55°C<br>(-40°F ~ +131°F)                           | -  | -  | -  |
| Certification                     | IP66, IK10  | -  | -  | -  |
| Power Consumption                 | PoE: 12.95W   | -  | -  | -  |
| Dimensions (WxHxD) / Weight       | Ø197.6 x 84mm<br>(Ø7.78" x 3.31")<br>1250g (2.76 lb)        | Ø35.5 x 35.9 mm<br>(Ø1.39" x 1.41")<br>35g (0.08 lb) | Ø35.5 x 35.9 mm<br>(Ø1.39" x 1.41")<br>35g (0.08 lb) | Ø35.5 x 35.9 mm<br>(Ø1.39" x 1.41")<br>35g (0.08 lb) |
| Additional Features               | Exchangeable 2ea x 5MP lens modules,<br>Hallway view, Defog | -  | -  | -  |



**PNM-9000VQ**  
Max. 20MP Multi-directional Camera



**SLA-5M7000Q**  
5MP lens for PNM-9000VQ



**SLA-5M4600Q**  
5MP lens for PNM-9000VQ



**SLA-5M3700Q**  
5MP lens for PNM-9000VQ

|                                   | PNM-9000VQ<br>Max. 20MP Multi-directional Camera               | SLA-5M7000Q<br>5MP lens for PNM-9000VQ               | SLA-5M4600Q<br>5MP lens for PNM-9000VQ               | SLA-5M3700Q<br>5MP lens for PNM-9000VQ               |
|-----------------------------------|--|--|--|--|
| Imaging Device                    | -  | 1/1.8" 5MP CMOS                                      | 1/1.8" 5MP CMOS                                      | 1/1.8" 5MP CMOS                                      |
| Min. Illumination                 | -  | Color : 0.16Lux (F1.6)<br>B/W : 0.16Lux (F1.6)       | Color : 0.16Lux (F1.6)<br>B/W : 0.16Lux (F1.6)       | Color : 0.16Lux (F1.6)<br>B/W : 0.16Lux (F1.6)       |
| Video Output                      | CVBS 1.0Vp-p   | -  | -  | -  |
| Focal Length                      | -  | 7.0mm fixed  | 4.6mm fixed  | 3.7mm fixed  |
| Angular Field of View             | -  | H : 50.7° / V : 37.8° / D : 63.8°                    | H : 77.9° / V : 57.9° / D : 98.7°                    | H : 97.5° / V : 71.9° / D : 126.2°                   |
| Pan / Tilt / Rotate               | -  | ±90° / 40° ~ 89° / ±180°                             | ±90° / 50° ~ 80° / ±180°                             | ±90° / 59° ~ 66° / ±180°                             |
| IR Viewable Length                | -  | -  | -  | -  |
| Day & Night                       | Auto (Electrical)  | Auto (Electrical)                                    | Auto (Electrical)                                    | Auto (Electrical)                                    |
| Wide Dynamic Range                | 150dB (2MP), 120dB (5MP)                                       | 120dB  | 120dB  | 120dB  |
| Digital Noise Reduction           | SSNRV  | -  | -  | -  |
| Digital Image Stabilization       | Support  | -  | -  | -  |
| Analytics                         | Intelligent analytics  | -  | -  | -  |
| Business Intelligence             | -  | -  | -  | -  |
| Alarm I/O                         | -  | -  | -  | -  |
| Audio I/O                         | -  | -  | -  | -  |
| Video Compression                 | H.265, H.264, MJPEG  | -  | -  | -  |
| Resolution / Max. Frame Rate      | 5MP / 30fps, 2MP / 60fps                                       | -  | -  | -  |
| WiseStream                        | WiseStream II  | -  | -  | -  |
| Streaming                         | Up to 10 Profiles  | -  | -  | -  |
| Edge Storage                      | SD/SDHC/SDXC   | -  | -  | -  |
| Application Programming Interface | ONVIF Profile S, SUNAPI  | -  | -  | -  |
| Operating Temperature             | -40°C ~ +55°C<br>(-40°F ~ +131°F)                              | -  | -  | -  |
| Certification                     | IP66, IK10   | -  | -  | -  |
| Power Consumption                 | PoE+ : 25.5W   | -  | -  | -  |
| Dimensions (WxHxD) / Weight       | Ø253 x 130mm<br>(Ø9.96" x 5.12")<br>3.0 kg (6.7 lb)            | Ø35.5 x 35.9 mm<br>(Ø1.39" x 1.41")<br>35g (0.08 lb) | Ø35.5 x 35.9 mm<br>(Ø1.39" x 1.41")<br>35g (0.08 lb) | Ø35.5 x 35.9 mm<br>(Ø1.39" x 1.41")<br>35g (0.08 lb) |
| Additional Features               | Exchangeable 4ea x 2MP / 5MP lens modules, Hallway view, Defog | -  | -  | -  |





**SLA-2M6000Q**  
2MP lens for PNM-9000VQ



**SLA-2M3600Q**  
2MP lens for PNM-9000VQ



**SLA-2M2800Q**  
2MP lens for PNM-9000VQ



**SLA-2M2400Q**  
2MP lens for PNM-9000VQ

|                                   |  |  |  |  |
|-----------------------------------|--|--|--|--|
| Imaging Device                    | 1/2.8" 2MP CMOS                                      | 1/2.8" 2MP CMOS                                      | 1/2.8" 2MP CMOS                                      | 1/2.8" 2MP CMOS                                      |
| Min. Illumination                 | Color : 0.055Lux (F2.0)<br>B/W : 0.055Lux (F2.0)     | Color : 0.055Lux (F2.0)<br>B/W : 0.055Lux (F2.0)     | Color : 0.055Lux (F2.0)<br>B/W : 0.055Lux (F2.0)     | Color : 0.055Lux (F2.0)<br>B/W : 0.055Lux (F2.0)     |
| Video Output                      | -  | -  | -  | -  |
| Focal Length                      | 6.0mm fixed  | 3.6mm fixed  | 2.8mm fixed  | 2.4mm fixed  |
| Angular Field of View             | H: 50.4° / V: 28.8° / D: 58.1°                       | H: 94.8° / V: 49.3° / D: 114.3°                      | H: 107.4° / V: 62.2° / D: 122.0°                     | H: 135.4° / V: 71.2° / D: 161.6°                     |
| Pan / Tilt / Rotate               | ±90° / 30° ~ 89° / ±180°                             | ±90° / 37° ~ 89° / ±180°                             | ±90° / 40° ~ 89° / ±180°                             | ±90° / 62° / ±180°                                   |
| IR Viewable Length                | -  | -  | -  | -  |
| Day & Night                       | Auto (Electrical)                                    | Auto (Electrical)                                    | Auto (Electrical)                                    | Auto (Electrical)                                    |
| Wide Dynamic Range                | 150dB  | 150dB  | 150dB  | 150dB  |
| Digital Noise Reduction           | -  | -  | -  | -  |
| Digital Image Stabilization       | -  | -  | -  | -  |
| Analytics                         | -  | -  | -  | -  |
| Business Intelligence             | -  | -  | -  | -  |
| Alarm I/O                         | -  | -  | -  | -  |
| Audio I/O                         | -  | -  | -  | -  |
| Video Compression                 | -  | -  | -  | -  |
| Resolution / Max. Frame Rate      | -  | -  | -  | -  |
| WiseStream                        | -  | -  | -  | -  |
| Streaming                         | -  | -  | -  | -  |
| Edge Storage                      | -  | -  | -  | -  |
| Application Programming Interface | -  | -  | -  | -  |
| Operating Temperature             | -  | -  | -  | -  |
| Certification                     | -  | -  | -  | -  |
| Power Consumption                 | -  | -  | -  | -  |
| Dimensions (WxHxD) / Weight       | Ø35.5 x 35.9 mm<br>(Ø1.39" x 1.41")<br>30g (0.07 lb) | Ø35.5 x 35.9 mm<br>(Ø1.39" x 1.41")<br>30g (0.07 lb) | Ø35.5 x 35.9 mm<br>(Ø1.39" x 1.41")<br>30g (0.07 lb) | Ø35.5 x 35.9 mm<br>(Ø1.39" x 1.41")<br>30g (0.07 lb) |
| Additional Features               | -  | -  | -  | -  |



**PNM-9320VQP**

20MP Multi-directional + 2MP 32x PTZ



**SLA-5M7000P**

5MP lens for PNM-9320VQP



**SLA-5M4600P**

5MP lens for PNM-9320VQP



**SLA-5M3700P**

5MP lens for PNM-9320VQP



**SLA-2M6000P**

2MP lens for PNM-9320VQP

|                                   | PNM-9320VQP   | SLA-5M7000P  | SLA-5M4600P  | SLA-5M3700P  | SLA-2M6000P  |
|-----------------------------------|---|--|--|--|--|
| Imaging Device                    | 1/2.8" 2.4MP CMOS (PTZ)   | 1/1.8" 5MP CMOS                                      | 1/1.8" 5MP CMOS                                      | 1/1.8" 5MP CMOS                                      | 1/2.8" 2MP CMOS                                      |
| Min. Illumination                 | Color : 0.05Lux (F1.6)<br>B/W : 0.005Lux (F1.6) (PTZ)                       | Color : 0.16Lux (F1.6)<br>B/W : 0.16Lux (F1.6)       | Color : 0.16Lux (F1.6)<br>B/W : 0.16Lux (F1.6)       | Color : 0.16Lux (F1.6)<br>B/W : 0.16Lux (F1.6)       | Color : 0.055Lux (F2.0)<br>B/W : 0.055Lux (F2.0)     |
| Video Output                      | CVBS 1.0 Vp-p (Multi)   | -  | -  | -  | -  |
| Focal Length                      | 4.44 ~ 142.6mm (Optical 32x)<br>F1.6 (Wide) / F4.4 (Tele) (PTZ)             | 7.0mm fixed  | 4.6mm fixed  | 3.7mm fixed  | 6.0mm fixed  |
| Angular Field of View             | H : 61.8° (Wide) ~ 2.19° (Tele)<br>V : 36.2° (Wide) ~ 1.24° (Tele)<br>(PTZ) | H : 50.7° / V : 37.8° / D : 63.8°                    | H : 77.9° / V : 57.9° / D : 98.7°                    | H : 97.5° / V : 71.9° / D : 126.2°                   | H : 50.4° / V : 28.8° / D : 58.1°                    |
| Pan / Tilt / Rotate               | 360° Endless / 190° (-5° ~ 185°)<br>(PTZ)                                   | ±90° / +12° ~ +93° / ±180°                           | ±90° / +21° ~ +85° / ±180°                           | ±90° / +36° ~ +73° / ±180°                           | ±90° / +10° ~ +95° / ±180°                           |
| IR Viewable Length                | -   | -  | -  | -  | -  |
| Day & Night                       | Electrical (Multi), ICR (PTZ)   | Auto (Electrical)                                    | Auto (Electrical)                                    | Auto (Electrical)                                    | Auto (Electrical)                                    |
| Wide Dynamic Range                | 150dB (2MP), 120dB (5MP)  | 120dB  | 120dB  | 120dB  | 150dB  |
| Digital Noise Reduction           | SSNRV   | -  | -  | -  | -  |
| Digital Image Stabilization       | Support<br>(Built-in Gyro sensor - PTZ)                                     | -  | -  | -  | -  |
| Analytics                         | Intelligent analytics<br>* Defocus detection (Multi)                        | -  | -  | -  | -  |
| Business Intelligence             | -   | -  | -  | -  | -  |
| Alarm I/O                         | 1 / 2   | -  | -  | -  | -  |
| Audio I/O                         | -   | -  | -  | -  | -  |
| Video Compression                 | H.265, H.264, MJPEG   | -  | -  | -  | -  |
| Resolution / Max. Frame Rate      | 5MP / 30fps, 2MP / 60fps  | -  | -  | -  | -  |
| WiseStream                        | WiseStream II   | -  | -  | -  | -  |
| Streaming                         | Up to 10 Profiles   | -  | -  | -  | -  |
| Edge Storage                      | SD/SDHC/SDXC  | -  | -  | -  | -  |
| Application Programming Interface | ONVIF Profile S, SUNAPI   | -  | -  | -  | -  |
| Operating Temperature             | -35°C ~ +55°C (-31°F ~ +131°F)  | -  | -  | -  | -  |
| Certification                     | IP66, IK10  | -  | -  | -  | -  |
| Power Consumption                 | HPoE : Max 65W  | -  | -  | -  | -  |
| Dimensions (WxHxD) / Weight       | Ø367.8 x 381.5mm<br>(Ø144.49" x 15.02")<br>7.05kg (16.1 lb)                 | Ø35.5 x 35.9 mm<br>(Ø1.39" x 1.41")<br>35g (0.08 lb) | Ø35.5 x 35.9 mm<br>(Ø1.39" x 1.41")<br>35g (0.08 lb) | Ø35.5 x 35.9 mm<br>(Ø1.39" x 1.41")<br>35g (0.08 lb) | Ø35.5 x 35.9 mm<br>(Ø1.39" x 1.41")<br>30g (0.07 lb) |
| Additional Features               | Exchangeable 4ea x 2MP /<br>5MP lens modules,<br>Hallway view, Defog        | -  | -  | -  | -  |



**SLA-2M3600P**  
2MP lens for PNM-9320VQP



**SLA-2M2800P**  
2MP lens for PNM-9320VQP



**SLA-2M2400P**  
2MP lens for PNM-9320VQP



**SLA-2M1200P**  
2MP lens for PNM-9320VQP

|                                   |  |  |  |  |
|-----------------------------------|--|--|--|--|
| Imaging Device                    | 1/2.8" 2MP CMOS                                      | 1/2.8" 2MP CMOS                                      | 1/2.8" 2MP CMOS                                      | 1/2.8" 2MP CMOS                                      |
| Min. Illumination                 | Color : 0.055Lux (F2.0)<br>B/W : 0.055Lux (F2.0)     | Color : 0.055Lux (F2.0)<br>B/W : 0.055Lux (F2.0)     | Color : 0.055Lux (F2.0)<br>B/W : 0.055Lux (F2.0)     | Color : 0.055Lux (F2.0)<br>B/W : 0.055Lux (F2.0)     |
| Video Output                      | -  | -  | -  | -  |
| Focal Length                      | 3.6mm fixed  | 2.8mm fixed  | 2.4mm fixed  | 12mm fixed   |
| Angular Field of View             | H : 94.8° / V : 49.3° / D : 114.3°                   | H : 107.4° / V : 62.2° / D : 122.0°                  | H : 135.4° / V : 71.2° / D : 161.6°                  | H : 26.3° / V : 14.9° / D : 30.0°                    |
| Pan / Tilt / Rotate               | ±90° / +22° ~ +84° / ±180°                           | ±90° / +26° ~ +80° / ±180°                           | ±90° / +52° ~ +56° / ±180°                           | ±90° / +10° ~ +97° / ±180°                           |
| IR Viewable Length                | -  | -  | -  | -  |
| Day & Night                       | Auto (Electrical)                                    | Auto (Electrical)                                    | Auto (Electrical)                                    | Auto (Electrical)                                    |
| Wide Dynamic Range                | 150dB  | 150dB  | 150dB  | 150dB  |
| Digital Noise Reduction           | -  | -  | -  | -  |
| Digital Image Stabilization       | -  | -  | -  | -  |
| Analytics                         | -  | -  | -  | -  |
| Business Intelligence             | -  | -  | -  | -  |
| Alarm I/O                         | -  | -  | -  | -  |
| Audio I/O                         | -  | -  | -  | -  |
| Video Compression                 | -  | -  | -  | -  |
| Resolution / Max. Frame Rate      | -  | -  | -  | -  |
| WiseStream                        | -  | -  | -  | -  |
| Streaming                         | -  | -  | -  | -  |
| Edge Storage                      | -  | -  | -  | -  |
| Application Programming Interface | -  | -  | -  | -  |
| Operating Temperature             | -  | -  | -  | -  |
| Certification                     | -  | -  | -  | -  |
| Power Consumption                 | -  | -  | -  | -  |
| Dimensions (WxHxD) / Weight       | Ø35.5 x 35.9 mm<br>(Ø1.39" x 1.41")<br>30g (0.07 lb) | Ø35.5 x 35.9 mm<br>(Ø1.39" x 1.41")<br>30g (0.07 lb) | Ø35.5 x 35.9 mm<br>(Ø1.39" x 1.41")<br>30g (0.07 lb) | Ø35.5 x 35.9 mm<br>(Ø1.39" x 1.41")<br>30g (0.07 lb) |
| Additional Features               | -  | -  | -  | -  |



**PNM-9030V**  
15MP 180°/220° Panoramic Camera



**PNM-9020V**  
7.3MP 180° Panoramic Camera



**PNM-9081VQ**  
20MP Multi-directional Camera



**PNM-9080VQ**  
8MP Multi-directional Camera

|                                   |   |   |  |  |
|-----------------------------------|---|---|--|--|
| Imaging Device                    | 1/2.8" 5MP x 4CH  | 7.3MP (2MP x 4CH)   | 1/1.8" 6MP x 4CH   | 1/2.8" 2.38MP x 4CH  |
| Min. Illumination                 | Color : 0.15Lux (F2.0)<br>B/W : 0.01Lux (F2.0)                      | Color : 0.3Lux (F2.0)<br>B/W : 0.03Lux (F2.0)                       | Color : 0.007Lux (F1.2)<br>B/W : 0.007Lux (F1.2)   | Color : 0.015Lux (F1.4)<br>B/W : 0.0015Lux (F1.4)  |
| Video Output                      | Micro USB Type B  | -   | CVBS 1.0Vp-p   | CVBS 1.0Vp-p   |
| Focal Length                      | 4mm fixed   | 3.6mm fixed   | 3 ~ 6mm (2x)<br>motorized varifocal  | 2.8 ~ 12mm (4.3x)<br>motorized varifocal   |
| Angular Field of View             | [180° mode] H: 180° / V: 70°<br>[220° mode] H: 220° / V: 52°        | [Total 4sensor] H: 180° / V: 84°                                    | H: 102.5° (Wide) ~ 38.7° (Tele) /<br>V: 74.2° (Wide) ~ 29.0° (Tele) /<br>D: 135.5° (Wide) ~ 48.6° (Tele) | H: 119.5° (Wide) ~ 27.9° (Tele) /<br>V: 62.8° (Wide) ~ 15.7° (Tele) /<br>D: 142.1° (Wide) ~ 32.0° (Tele) |
| Pan / Tilt / Rotate               | 0° ~ 355° / 0° ~ 60° / -  | 0° ~ 355° / 0° ~ 60° / -  | [Quad mode] ±30° / 10° ~ 41° / ±90°,<br>[Center mode] ±60° / 10° ~ 41°,<br>10° ~ 90°(CH2/Center) / ±90°  | [Quad mode] ±30° / 10° ~ 41° / ±90°,<br>[Center mode] ±60° / 10° ~ 41°,<br>10° ~ 90°(CH2/Center) / ±90°  |
| IR Viewable Length                | -   | -   | -  | -  |
| Day & Night                       | Auto (ICR)  | Auto (ICR)  | Auto (ICR)   | Auto (ICR)   |
| Wide Dynamic Range                | 120dB   | -   | 120dB  | 150dB  |
| Digital Noise Reduction           | SSNR III  | SSNR III  | SSNRV  | SSNRV  |
| Digital Image Stabilization       | -   | -   | Support (Built-in Gyro sensor)   | Support (Built-in Gyro sensor)   |
| Analytics                         | Intelligent analytics<br>Audio detection<br>Sound classification    | Intelligent analytics<br>Audio detection                            | Intelligent analytics  | Intelligent analytics  |
| Business Intelligence             | Heatmap   | Heatmap   | -  | -  |
| Alarm I/O                         | 1 / 1   | 1 / 1   | 1 / 1  | 1 / 1  |
| Audio I/O                         | Line in / Line out  | Line in / Line out  | -  | -  |
| Video Compression                 | H.265, H.264, MJPEG   | H.265, H.264, MJPEG   | H.265, H.264, MJPEG  | H.265, H.264, MJPEG  |
| Resolution / Max. Frame Rate      | 15.5MP / 30fps  | 7.3MP / 30fps   | 5MP / 30fps  | 2MP / 60fps  |
| WiseStream                        | WiseStream II   | WiseStream  | WiseStream II  | WiseStream II  |
| Streaming                         | Up to 5 or 3 profiles for each CH                                   | Up to 10 profiles   | Up to 40 profiles  | Up to 40 profiles  |
| Edge Storage                      | Micro SD/SDHC/SDXC  | SD/SDHC/SDXC  | Micro SD/SDHC/SDXC   | Micro SD/SDHC/SDXC   |
| Application Programming Interface | ONVIF profile S/G, SUNAPI   | ONVIF profile S/G, SUNAPI,<br>Wisenet Open Platform                 | ONVIF profile S, SUNAPI  | ONVIF profile S, SUNAPI  |
| Operating Temperature             | -40°C ~ +55°C<br>(-40°F ~ +131°F)<br>* Start up above -30°C (-22°F) | -40°C ~ +55°C<br>(-40°F ~ +131°F)<br>* Start up above -35°C (-31°F) | -40°C ~ +55°C<br>(-40°F ~ +131°F)  | -40°C ~ +55°C<br>(-40°F ~ +131°F)  |
| Certification                     | IP66, IK10  | IP66, IK10  | IP66, IK10   | IP66, IK10   |
| Power Consumption                 | PoE+: Max 25.5W<br>12VDC: Max 21.0W                                 | PoE+: Max 25.5W - Heater on<br>12VDC: Max 21.0W - Heater on         | HPoE: Max 33.6W<br>12VDC: Max 28.8W  | PoE+: Max 25.5W<br>12VDC: Max 21.6W  |
| Dimensions (WxHxD) / Weight       | Ø253 x H165mm<br>(Ø9.96" x 6.5")<br>3.2Kg (7.1lb)                   | Ø199.0 x 143.5mm<br>(Ø7.83" x 5.65")<br>2.03Kg (4.5 lb)             | Ø314 x 152mm<br>(Ø12.36" x 5.98")<br>4.89kg (10.78 lb)   | Ø314 x 152mm<br>(Ø12.36" x 5.98")<br>4.83kg (10.65 lb)   |
| Additional Features               | Defog   | Defog   | Hallway view, Defog  | Hallway view, Defog  |

---

#### HEAD OFFICE

6, Pangyo-ro 319beon-gil, Bundang-gu, Seongnam-si,  
Gyeonggi-do, 13488 Rep. of KOREA  
Tel : +82.70.7147.8753 Fax: +82.31.8018.3740  
Hanwha-Security.com

---

#### Hanwha Techwin America

500 Frank W. Burr Blvd, Suite 43 Teaneck, NJ 07666  
Toll Free : +1.877.213.1222  
Direct : +1.201.325.6920  
Fax : +1.201.373.0124  
HanwhaSecurity.com

---

#### Hanwha Techwin Europe

Heriot House, Heriot Road, Chertsey, Surrey, KT16 9DT, United Kingdom  
Tel : +44.1932.57.8100  
Fax : +44.1932.57.8101  
Hanwha-Security.eu

---

#### Hanwha Techwin Tianjin

No.11 Weiliu Rd., Micro-electronic Industrial Park,  
Jingang Road Tianjin 300385, China  
Tel : +86-22-2388-7788 (8700)  
Hanwha-Security.cn

---

#### Hanwha Techwin Middle East FZE

JAFZA View 18, 20th floor, office 2001, 2002, 2003,  
Downtown Jebel Ali, Dubai, United Arab Emirates  
Hanwha-Security.com

---

#### Hanwha Techwin Singapore Branch

4 Shenton Way, #15-06, SGX Centre 2, Singapore, 068807  
Tel : +65.6221.7512  
Fax : +65.6227.9337  
Hanwha-Security.com

---

#### Hanwha Techwin Russia Office

40/4, Bolshaya Ordynka str., Moscow, Russia, 119017  
Tel : +7.499.750.17.30  
Hanwha-Security.eu/ru/

---

#### Hanwha Techwin Vietnam Hanoi Office

28th Floor, Handico Building, Pham Hung Street, Me Tri ward,  
Nam Tu Liem District, Hanoi City, Vietnam  
Tel : +84.91.982.40.88  
Hanwha-Security.com

© 2020 Hanwha Techwin Co., Ltd. All rights reserved.

DESIGN AND SPECIFICATIONS ARE SUBJECT TO CHANGE WITHOUT NOTICE  
Under no circumstances, this document shall be reproduced, distributed or changed,  
partially or wholly, without formal authorization of Hanwha Techwin Co., Ltd.  
REVISED 01 - 2020 (M.H)

