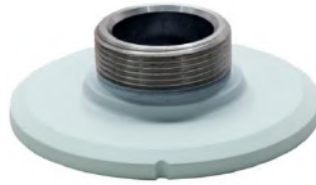


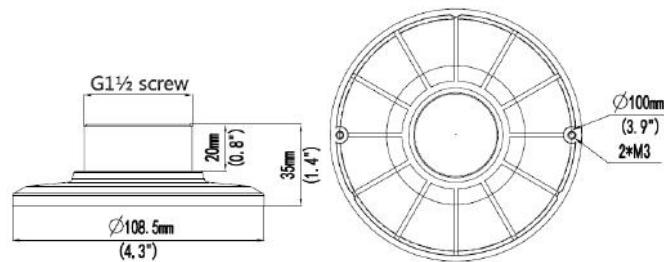
# TR-UF45-D-IN Fixed Dome Plate Mount



## Specifications

Bracket	TR-UF45-D-IN
Application	Wall or pendant installation for Fixed Dome
Dimensions	Φ100mmx35mm(Φ3.9" x1.4")
Weight	0.3kg(0.66 lb)
Material	Aluminum alloy

## Dimensions



### Zhejiang Uniview Technologies Co.,Ltd.

South Tower, Building 10, Wanlun Science Park, 88 Jiangling Road, Hangzhou, P.R.China 310051

Email: [overseasbusiness@uniview.com](mailto:overseasbusiness@uniview.com); [globalsupport@uniview.com](mailto:globalsupport@uniview.com)

<http://www.uniview.com>

©2015 Zhejiang Uniview Technologies Co.,Ltd. All rights reserved.

\*Product specifications and availability are subject to change without notice.